



# Shrewsbury

Town Council

May 2022



@FOLLOW US



[www.shrewsburytowncouncil.gov.uk](http://www.shrewsburytowncouncil.gov.uk)



# UPDATE FROM COUNCILLOR ELISABETH ROBERTS, MAYOR OF SHREWSBURY



As I start my Mayoral term, I want to use the next twelve months to highlight those aspects of life in Shrewsbury that can be easily overlooked.

I want to use my personal experience, having had a tough start in my life in social services care in Dorset.

However, this enabled me to develop a determined resilience to succeed.



Mayor of Shrewsbury, Councillor Elisabeth Roberts, with Town Clerk Helen Ball and former Mayor, Councillor Julian Dean

Having been laughingly informed that I wouldn't amount to anything, I decided to move further north and settled in Shrewsbury, where I trained as a dental nurse, working in Shrewsbury Prison and a variety of clinics.

After completing an Access to Higher Education certificate, I attended university, where I trained as a radiographer.

To those who think a child from social services care can amount to nothing, think again, they can do so much more and there are many of us who can be shown as an example of what can be achieved.

During the last two years, I have set up and run the Shrewsbury and Surrounding Villages Mutual Aid Group. I have worked to help set up the link between the Co-Op and vulnerable

residents, so that they can order essential supplies with organised transport to deliver the supplies to their door. This has proved to be a valuable service, not just for the essential supplies, but that ten minute conversation which developed between volunteers provided a vital lifeline for those who were isolated from loved ones.

I currently work in education, supporting pupils who have a barrier to education and I really enjoy developing those positive relationships with pupils and helping to close those obstacles that exist, whilst these amazing pupils in turn educate the educators.

Since being elected to the Town Council last year, I have worked on youth services, the recreation and leisure committee and have helped Harlescott Grange Community Hub develop, which in turn supports the community and its residents.

I am very proud to be a part of the Shrewsbury community, my adopted home, and my year as Shrewsbury Mayor will concentrate on bringing all communities together, as we saw at the beginning of the pandemic.

I will also have my three wonderful children join me and represent Shrewsbury youth whilst also supporting mental health.



New Mayor of Shrewsbury with her daughter Martha at Mayor Making on 9 May 2022

# HELEN BALL, TOWN CLERK OF SHREWSBURY TOWN COUNCIL



The Burgesses and Freeman have been a fundamental part of this town for centuries.

They were the principal inhabitants of Shrewsbury charged with the governance of the town's defences, its day to day running and its collection of taxes, and in return, they were granted valuable rights and privileges.

They probably still have the rights to drive sheep through the Quarry, though I wouldn't suggest they do it as our park staff do get a bit twitchy about things like that.

This form of governance continued until well into the 19<sup>th</sup> Century when, in 1835, the Municipal Corporations Act created the more elected process of local government that we know today.

Over the centuries, the Gild of Freeman has been the domain of the men.

But in 2009, Gilds of Freeman across the country pressed for

changes to legislation to allow for freemen to be passed down the female line and, in September 2010, I installed the first female Freeman of Shrewsbury.

Over the 12 years I have been Town Clerk, I have installed 94 Freeman, 50 of which have been women.

We have seen fathers and daughters, mothers and sons, brothers and sisters, cousins, aunts and uncles of the same family being sworn in at the same time and often being proudly overseen by their relatives who are existing Freeman.

I have had two ladies who were installed on the dates they were due to give birth and many have come from very different walks of life arriving from all corners of the globe for a family celebration in Shrewsbury.

The last Freeman to be installed was a Mayor of Kennett Township in Chester



The Freeman of Shrewsbury accompany the Mayor, Cllr Jon Tandy, and Mayoress, Mrs Diane Tandy, to St Chad's Church in May 2013

County, Pennsylvania, so the conversation focussed on how we run the town compared to how he runs things.

The swearing in of Freeman and the keeping of the Roll of Honour has been one of the more interesting duties as Town Clerk.

I read the Ancient Oath that they are required to sign up to and I often amusingly wonder what they would do if the Mayor ever contacted them asking to exert his rights and command them to undertake a spot of Sentry Duty on the Welsh Bridge in the early hours.

All of this goes to cement the many customs and traditions of Shrewsbury and mine and the Mayor's continued duty of upholding and respecting these traditions.

It is after all what makes Shrewsbury the special place that it is.



The first females to be sworn in to the Gild of Freeman in Shrewsbury in 2010  
Photo: Shropshire Star



# AWARDS FOR SHREWSBURY'S UNSUNG HEROES

The unsung community heroes of Shrewsbury have been officially recognised by the Mayor for playing their part in helping to make the town a special place to live, work and visit.

The Mayor's Awards scheme is Shrewsbury's equivalent of "The Oscars", with local individuals, organisations, groups and businesses being recognised for their achievements, which benefit the town.

With some of the town's most dedicated citizens and organisations receiving honours from Mayor of Shrewsbury, Councillor Julian Dean, this year's Mayor's Awards ceremony took place at the Theatre Severn last month.

The overall winners in each category were:

Built Heritage – The Churches Conservation Trust  
Business – Mark Bebb  
Climate Change – Shropshire Cycle Hub  
Community – Harlescott Grange Community Hub  
Courtesy – Shropshire European Organisation  
Environment – Audrey Menhinick  
Tourism – Aaron Brown  
Youth – Shrewsbury Academy

The Lifetime Achievement Award went to Geoff Hardy and Peter Ruscoe for their support of numerous local initiatives, many aimed at supporting and championing the LGBT community as well as supporting other groups and individuals in need of help.

The results for this year's Market Trader of the Year for Shrewsbury Market Hall, which is jointly run by the both Shropshire Council and the Town Council, were also revealed at the event. Hundreds of votes were cast and the overall winner was House of Yum, closely followed by Tom's Table in second place and The Card Stall in third place.

The Mayor also presented twelve personal awards to individuals and organisations he has met throughout his mayoral year that he felt had made a significant contribution to the town. Certificates were presented to Katarzyna Fejfer, Amanda Jones and Oksana Chapman; Michael Morris; Shrewsbury Food Hub; Shrewsbury Food Bank; Green Options Zero Waste; Rosie's Emporium; Stuart Spiers; Chris Bainger, Dan Wrench and Tom Endacott.

Councillor Dean said: "The Mayor's Awards are my opportunity to thank some of the wonderful people and organisations who do so much to make our town a great place to live. It's a real privilege to recognise and reward those who gladly give their time and talent to benefit others living in our local community.

"Throughout my year as Mayor, whilst it has been governed by Coronavirus restrictions, I have nevertheless, been constantly amazed by the kindness, generosity and compassion of local people, and I'm only sorry that it's impossible to recognise everyone's contribution with an award. However, I'm delighted that I've been able to give out these awards on the night to so many home-grown volunteers.

"Our local heroes believe in Shrewsbury, and its people, and that's what motivates them."

## Photos:

Below left:

L-R: Oksana Chapman, Amanda Jones, Katarzyna Fejfer & Mayor of Shrewsbury collecting their Mayor's Special Awards

Below right:

Geoff Hardy and Peter Ruscoe collecting their Lifetime Achievement Award from the Mayor of Shrewsbury



# SHREWSBURY'S NEW MAYOR TAKES OFFICE

The new Mayor of Shrewsbury has been elected for the coming year, with Councillor Elisabeth Roberts officially sworn in as Mayor at the annual meeting of Shrewsbury Town Council this week.

The mayor-making ceremony, which was held in The Walker Theatre, saw Councillor Roberts take over the role as civic leader from outgoing Mayor, Councillor Julian Dean.

Councillor Becky Wall was also appointed as Deputy Mayor.

Councillor Roberts said her main aim as Mayor is to promote the wonderful and varied communities in Shrewsbury.

She said: "I'm looking forward to the next twelve months and it is a great privilege to be elected as Mayor of Shrewsbury following on from all those who have held the post before me.

"I am very proud to be a part of the Shrewsbury community, my adopted home, and my year as Shrewsbury Mayor will concentrate on bringing all communities together, as we saw at the beginning of the pandemic.

"I will also have my three wonderful children join me and to represent Shrewsbury youth whilst also supporting mental health causes."

She also took the opportunity to thank former Mayor, Julian Dean for the work he had done for the town over the last twelve months.

"Despite the difficult conditions the Mayor has encountered with the Coronavirus pandemic, he



Mayor of Shrewsbury, Councillor Elisabeth Roberts at Mayor Making on May 9

has done a tremendous job of representing Shrewsbury during his term of office. It is now my responsibility to carry on the tradition of highlighting the fabulous town we have here both within our community and beyond."

The incoming Mayor also outlined her fundraising plans for the year.

"During my Mayoral year, I will be supporting Harlescott Grange Community Hub which helps to support local residents and has made great progress over the last eighteen months.

"In addition, I will also be supporting Omega Care, an organisation that has provided a variety of mental health support to both Shrewsbury and Shropshire communities, especially during the Lockdowns.

"There will be a range of fundraising events over the course of the next twelve months and I hope that people will come along to have some fun and raise money for these worthwhile causes."

Councillor Roberts will be officially sworn in at a civic service held at St Chad's Church on Sunday, May 15.

With no Civic Parade this year, guests should make their way directly to the church and be seated by 9.50am for the start of the service at 10.00am

Members of the public are welcome to attend.

The traditional Loving Cup ceremony took place last night when the Mayor was invited to drink from the vessel and toast the Queen and the town.



Councillor Elisabeth Roberts declaring her acceptance of the Office of Mayor of Shrewsbury at the Walker Theatre

# TOWN COUNCIL LOOKS TO BAN THE RELEASE OF SKY LANTERNS & BALLOONS ON ITS PROPERTY

At a meeting of Full Council in March, Shrewsbury Town Councillors voted unanimously to ban the release of sky lanterns and balloons on its property.

Councillor Rob Wilson, Ward Member for Copthorne, who brought the motion to Council, said: "For many years, the Marine Conservation Society has run a campaign to make sky lantern and balloon releases illegal by classifying this activity as 'littering'. Unfortunately, little progress has been made in this area and we still have the threat of damage to both the environment and animals."

The move follows Shropshire Council's resolution to ban sky lantern and balloon releases on its property in February, whilst Worcestershire has already banned the practice and Hereford has banned sky lantern releases.

Both the RSPCA and The National Farmers' Union of England have long campaigned for a ban and to make it illegal to release sky lanterns.



Photo: RSPCA

Shrewsbury Town Council is looking to get sky lanterns and balloons classed as litter.

Councillor Wilson added: "There has been a concerted effort to get local authorities to prohibit these activities on land they own, and whilst this has had some success around the country with more councils banning them, there is a need to go further.

"Sky lanterns are not only a fire hazard, but a threat to animals, including livestock and they also damage the environment. People may release them with the best of intentions, but once in the air, there is no control over where they float or where they come down.

"We have to encourage people to refrain from this way of

celebrating major life events with something more environmentally friendly that will have a more positive impact on wildlife and the environment in our towns and the countryside."

Whilst some balloons are sold as 'biodegradable', it can take up to four years to decompose. This litter can then pose a problem for wildlife potentially ingesting the material, whilst wire from sky lanterns can result in injuries to animals if they become entangled or trapped in it.

The Town Council is looking to request that the Government reclassifies the release of balloons and sky lanterns as 'littering', which will help to make the activity illegal throughout the country.

Alternative ideas to the release of balloons and sky lanterns for celebrations can be found on the RSPCA website:

Alternative ideas to the release of sky lanterns & balloons

## NEED TO GET IN TOUCH?

If you need to get in touch with us at the Town Council, you can do this in a number of ways:

Telephone: 01743 281010

E-mail: [enquiries@shrewsburytowncouncil.gov.uk](mailto:enquiries@shrewsburytowncouncil.gov.uk)



@ShrewsburyTC



@shrewsburytowncouncil



@shrewsbury\_town\_council



Or via our website:

Contact Shrewsbury Town Council



# APPLICATIONS INVITED FOR GRANT AWARDS SCHEME FOR LOCAL ORGANISATIONS

We are inviting local organisations to apply for grant funding in the latest round of applications.

We operate a scheme which awards grants to local organisations to help them achieve their aims and objectives. The grant can be used to fund either new projects or continued services and may also be used as matched funding.

We have a policy of assisting local community groups and applications must be from a properly formed group, club, committee or charity, which must show that the group has charitable/community aims whilst benefitting the residents of Shrewsbury.

Organisations will also need to show that they possess a

Constitution/Set of Rules, a bank account and Public Liability Insurance.

If your organisation is interested in our scheme and requires further guidance on whether your community group meets our criteria for financial support, or for an application form, please visit our website at:

**Community Grants**

Applications must be received by the closing deadline of Friday 8 July and will then be considered by members of the Finance & General Purposes Committee on Monday 18 July.

Please be aware that if your project is selected for consideration at this Committee meeting, representatives are

expected to attend to state their reasons why funding should be awarded and answer any questions about the project from Councillors.

In addition to the Community Grants we offer, funds are also available to finance local projects through Local Councillor Grants. We have allocated £750 to each of the seventeen Wards in Shrewsbury so that each local Councillor can consider and allocate funds in his/her local area.

It is a matter for the local Councillor as to the level of grant awarded and when that money is awarded. Please get in touch with your local Councillor for more information.

## SHREWSBURY CASTLE CARPET BED

The Castle Carpet Bed at the entrance to Shrewsbury Castle provides an annual focal point for visitors and has a new planting scheme twice a year.

The theme for our Spring bedding display is a forget-me-not.

The name refers to the shape of the leaves. According to a Greek myth, Zeus thought he had given all the plants a name, whereupon a small blue flower shouted "forget me not!". The supreme god decided to make life easy for himself by giving the plant that name.

Forget-me-nots symbolize true love and respect. When you give someone these tiny blooms, it represents a promise that you will always remember them and will keep them in your thoughts.

Our staff have used the following plants in the floral display:

Yellow Polyanthus  
Blue Polyanthus  
White Polyanthus  
Blue Hyacinth (Kronos)  
Yellow Daffodil (February Gold)



Right: The Castle Carpet Bed floral display for spring 2022

# LIME TREE WORKS COMPLETED IN THE QUARRY

The essential maintenance work on the lime trees in our Grade I Listed park was completed in March.

Shropshire-based Benbow Brothers Limited were contracted to undertake the full works programme, which commenced back in January.

The work involved crown raising all the avenue planted trees to provide adequate clearance to around six metres and crown reduce branches of selected trees over high footfall areas of the park.

Helen Ball, our town clerk, said: "The flooding of the River Severn in February has delayed the work, but we're pleased that the work has now been completed.

"Many of the trees in the Quarry are over 70 years old and we have a duty to ensure the longevity of our heritage assets in

the park. It is also essential that we maintain these mature trees to help reduce our carbon footprint as part of our commitment to become carbon neutral by 2030."

Using the international I-Trees software program which places a financial value of trees taking into account the social and environmental benefits they provide, Tree Officers recently valued the Quarry trees at around £10 million.

Councillor Kevin Pardy, chairman of our recreation and leisure committee, added: "We're delighted that the works on the Quarry lime trees are now completed. Whilst this is the first major commissioned works on the trees for nearly twenty years, we will still undertake our annual inspections and remedial work where necessary to ensure the safety of the public who use our park."



Works on the lime trees in the Quarry, undertaken by Benbow Brothers has now been completed



Photos: Benbow Brothers

## COUNTRYSIDE & GREENSPACE TEAM UPDATE

### TREE PLANTING IN MEMORY OF PAUL COHEN

The end of March saw the first anniversary of the death of one of our former Countryside Team members.

Paul Cohen died suddenly at his home in Cambridgeshire aged 37 in March 2021.

He had worked with us in 2007-2008 as part of a 'year in industry' placement from Aberystwyth University and went on to work for the RSPB and Huntingdon Council in similar conservation roles.

Many of the improvement projects he worked on with us are still

visible on our Countryside Sites.

He had stayed in touch and enjoyed coming back to Shrewsbury, years after he finished his placement.



Our Countryside and Greenspace Manager, Matt Wilcoxon, was joined by other friends and colleagues of Paul, James Mason and Mark Brice, to plant an Alder tree in the Rea Brook Valley in his memory.





# NEW PLANTERS IN NEW STREET

Following the social distancing measures introduced during the early stages of the Coronavirus pandemic, permanent planters have replaced the traffic cones along New Street in Frankwell.

Councillor Julian Dean, Ward member for Porthill, said: "Thanks to Shrewsbury Town Council and Shropshire Council for getting these planters in to New Street. The residents I've spoken to really like them!"

Our staff have planted the containers, with built-in reservoirs, with sustainable plants, which will provide some welcome colour within the street scene.

Local residents will be working with Councillor Dean to maintain the structures throughout the year.



# PLANT A TREE DAY - 11 MARCH 2022

Councillor Julian Dean, as Mayor of Shrewsbury, joined other civic dignitaries around the country in March to plant a tree in Shrewsbury's Quarry.

The event, organised by the National Association of Civic Officers (NACO), formed part of the Queen's Green Canopy project encouraging as many civic leaders as possible to plant a tree to mark the Jubilee.

The chosen day represented the seventieth day of the year in which the Queen marked the seventieth anniversary of her accession. NACO will produce a book listing all the Councils taking part and present it to the Queen when the country celebrates the Platinum Jubilee next month.

Councillor Dean, said: "It's a great honour to take part in this nationwide event and it's a good way to help mark the amazing achievement of her Majesty the Queen's reign of seventy years.

"This is a long-lasting and valuable way to mark The Queen's Platinum Jubilee and will also help to promote the importance of trees for the environment in a sustainable and relevant way. This nationwide scheme is also a great way to help restore the loss of biodiversity across the country, especially as native trees are being planted across the United Kingdom."

The planting of this tree will be included on the Queen's Green Canopy website, along with other

trees planted by Shrewsbury Town Council over the course of this Jubilee year.



Councillor Julian Dean, as Mayor of Shrewsbury, having planted a lime tree in the Quarry

# GET SNAPPING FOR OUR SHREWSBURY IN BLOOM PHOTO COMPETITION

We're inviting residents of Shrewsbury to submit their photographs in a bid to be featured on the front or back cover of the annual Shrewsbury in Bloom Portfolio of Evidence.

The Shrewsbury in Bloom Committee is offering local residents the opportunity to have their photo of the town on the front or back cover of the annual portfolio, which is presented to the Royal Horticultural Society's judges as they assess the town against exacting criteria.

The portfolio contains details of life in Shrewsbury under the 'Bloom Ethos' over the course of a twelve-month period.

With Coronavirus restrictions still in place this year, judging of the Bloom competitions was undertaken through the submission of the Portfolio.

Shrewsbury in Bloom was awarded Gold in the Heart of England in Bloom Small City Category.

When we think of Shrewsbury in Bloom, we automatically assume that we're talking about the plants and flowers we see around town.

As part of the town's entry into the Bloom competitions, the town is judged on a number of criteria, including Horticultural Excellence, Environmental Responsibility and Community Participation.

Chairman of Shrewsbury in Bloom, Keith Roberts, said: "We had an amazing response to our competition for the 2021 Bloom Portfolio and it was wonderful to

see so many people helping to support us with the work we do in the town. I would like to thank everyone who entered our competition.

"We had two worthy winners with Robert Gwilliam's photo of the Library in spring time for the front cover with Nigel Thorpe's dramatic photo of the Porthill Bridge whilst the River Severn was in full flood last January featuring on the back cover.

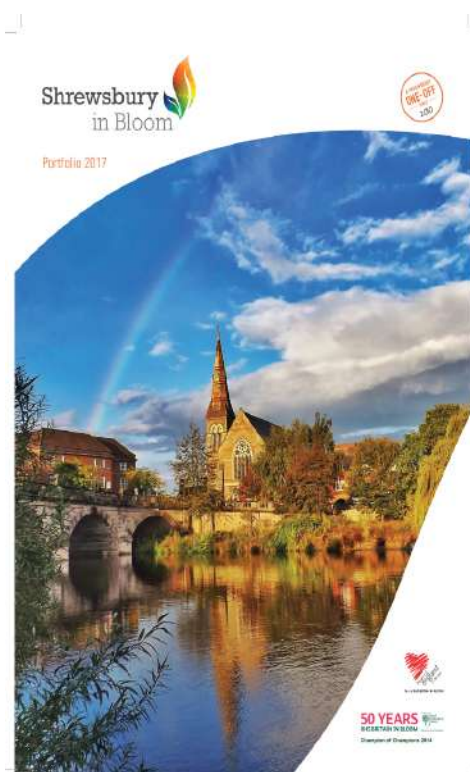
"Whilst we're not necessarily looking for photos of flowers, we want to showcase our beautiful town with pictures of buildings or places of local interest. I would encourage people to get snapping throughout the year and send their best photos for a chance to be featured on our Bloom Portfolio."

Photos should be taken within the last twelve months in the town of Shrewsbury.

Entries should be emailed to: [hilary.humphries@shrewsburytowncouncil.gov.uk](mailto:hilary.humphries@shrewsburytowncouncil.gov.uk) at any time until 31<sup>st</sup> May 2022.

To view our previous editions of the Shrewsbury in Bloom Portfolio, visit our website at:

**Shrewsbury in Bloom Portfolio**



Front cover of the 2017 Shrewsbury in Bloom Portfolio, taken by Lee Roberts



Back cover of the 2017 Shrewsbury in Bloom Portfolio, taken by Lee Roberts

Shrewsbury Town Council, Pigeon Hill, The Library, Castle Gates, Shrewsbury, SY1 1PS  
@shrewsbury11 | [www.bloomshrewsbury.com](http://www.bloomshrewsbury.com)





# GRAB YOUR BLOOMING BUSINESS BASKETS

Shops and businesses in Shrewsbury can help play their part in ensuring the town's reputation as "the Town of Flowers" is maintained by displaying hanging baskets prepared by our staff.

With over 300,000 plants set to grace our parks, hanging baskets, roundabouts and planters over the next few weeks, our workforce at the Weeping Cross greenhouse is nurturing the summer bedding plants to help make the town's streets and open spaces a floral masterpiece.

Hanging baskets for business premises are available for £50.00 each (inc. VAT) which includes delivery, maintenance and regular watering throughout the summer and then disposal at the end of the season.

Delivery of the baskets will take place from June 8 onwards and collection once the summer season is over will be at the end of September.

Orders must be placed by May 27.

Keith Roberts, chairman of the Shrewsbury in Bloom Group, said:



"Both the Town Council and Shrewsbury BID have contacted businesses in the town to promote the hanging basket scheme for this summer.

"The hanging baskets are one aspect of the floral features that help to ensure the town looks good for our residents and visitors alike.

"With the price of the Town Council's hanging baskets remaining the same as four years ago, they are great value for money as well as a colourful way of enhancing the town,

which really helps to make a difference to the visual appeal of Shrewsbury."

"We take great pride in the fact that Shrewsbury in Bloom is a partnership between residents, businesses and the commercial sector, the Town Council and various other stakeholders, and this is a fantastic opportunity for the business community to support our Town of Flowers image – which we believe is one of our greatest assets."

For companies within Shrewsbury who would like to place an order or require further information, please contact Gary Farmer on 01743 257651 or email:

[gary.farmer@shrewsburytowncouncil.gov.uk](mailto:gary.farmer@shrewsburytowncouncil.gov.uk)

Please note that all hanging baskets will be weight tested for safety and will require a bracket for installation, which will need to be sourced and installed independently.

[Download Hanging Basket Form](#)

## COUNTRYSIDE UNIT UPDATE

### Species spotlight: Scarlett Elf Cup at Rad Valley Wood

The scarlet elf cup fungus grows on decaying sticks and branches in damp spots and beneath leaf litter on the woodland floor, they have barely discernible stems, giving them the appearance of hollow bowls.

An uncommon species they grow from November to March, being found only in very damp areas.

Fungi belong to their own kingdom and get their nutrients and energy

from organic matter, rather than photosynthesis like plants. It is often just the fruiting bodies, or 'mushrooms', that are visible to us, arising from an unseen network of tiny filaments called 'hyphae'.

For more information on Rad Valley Woods visit our website at:

[Rad Valley Woods Countryside Site](#)



Scarlett Elf Cup at Rad Valley Wood

# SHREWSBURY IN BLOOM - TOWN OF FLOWERS COMPETITION 2022

The Shrewsbury in Bloom Group will be holding its annual Town of Flowers competition once again this summer and is asking members of the public to start planning their entries.

The Bloom Group will be looking for entries in the following categories:

- Residential front garden category
- Floral container/hanging basket
- Business premises

The annual competition is open to residents' front gardens and business premises and must be located within Shrewsbury Town Council's 17 wards.

The winners of the 2021 competition are:

Residential Front Garden  
Winner – Andrew Pugh  
Runner up – Tony Bywater

Residential Back Garden  
Winner – Tony Bywater  
Runner up – Liz Granato



Best Floral Container  
Winner – Mr & Mrs Brooks  
Runner up – Andrew Pugh

Commercial Property  
Winner – The Woodman  
Runner up – The Royal Oak

For more details, including entry criteria and a nomination form, please see the Town Council's website at:

Town of Flowers Competition



Entries should be submitted to [debbie.entwistle@shrewsburytowncouncil.gov.uk](mailto:debbie.entwistle@shrewsburytowncouncil.gov.uk) or by post to: Shrewsbury in Bloom Town of Flowers Competition, Riggs Hall, The Library, Castle Gates, Shrewsbury, SY1 2AS, by midday Friday, July 1.

Judging of the entries will take place in mid-July.

Keith Roberts, chairman of the Shrewsbury in Bloom Group, said: "It has been a very tough couple of years for everyone and we have noticed that there has been a greater interest in gardening.

"With summer fast approaching, people are starting to think and plan their garden schemes for the summer, and I would encourage people to think about entering our competition, or nominating someone else's great displays."

## PLEA TO KEEP DOGS ON A LEAD AROUND LIVESTOCK

Our Countryside and Greenspace staff are asking dog owners to ensure that they keep their dogs under close control when using the Council's sites and open spaces around the town.

Earlier this month, a cow was attacked and injured by an out-of-control dog at the Rea Brook Local Nature Reserve.

Jim Goldsmith, our Countryside ranger, said: "The cows have recently been brought back in to the Rea Brook Local Nature Reserve as part of our active management of the land.

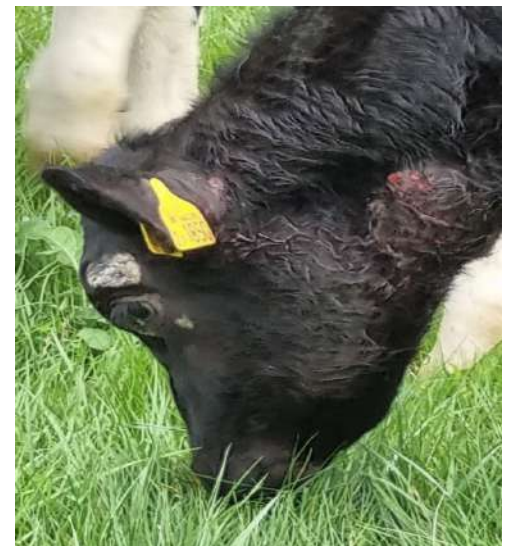
"The cow has suffered injuries to

her neck and ear and this attack has been reported to the farmer, who will visit the site to ensure that his livestock is recovering from the attack.

"The cow is expected to make a full recovery.

"By law, all dogs in public spaces must be under close control and it is an offence to allow a dog to injure livestock. We would ask that people visiting the Rea Brook Local Nature Reserve be aware that the cattle have been reintroduced to the site for the summer and ensure that their dogs are kept under control.

"If anyone saw the incident earlier today, please call West Mercia Police on 101 with the details of the attack."



The cow was attacked at the Rea Brook Local Nature Reserve



# Talk to us about your hospitals



The Shrewsbury and  
Telford Hospital  
NHS Trust

## We want you to:



talk to us about our  
hospital services



give us feedback on  
service changes  
and/or developments



share your experiences



have the opportunity to join  
events, health lectures and focus  
groups



Membership is free, just visit:  
[www.bit.ly/join-us-as-a-member](http://www.bit.ly/join-us-as-a-member)



## #GetInvolved





# YOUNG SHREWSBURY UPDATE

## EASTER ACTIVITIES FOR YOUNG PEOPLE

Our Youth Services provided organised activities for young people in the town for the first week of the Easter school holidays.

Activities took place from April 11 to 14 at The Grange Centre in Shrewsbury.

Working with a range of partners, including Shropshire Youth Services, Embrace, Shropshire HAF and Kynaston Road Community Centre, the scheme ensured that young people from age 11 to 16 had a range of activities in various locations across the town covering the two weeks of the school holidays.

Food was also provided for all those attending the sessions during the two weeks.

Andy Hall, our youth and community manager, said: "It's great that we were able to work with our community partners in the town to ensure that we could provide a range of meaningful activities for our young people which covered the two week school holiday. We also provided a free meal for those coming along for the activities, which was a massive boost to families in the current economic climate."

Photo right: Young People enjoying Easter Activities at The Grange Centre



## MAYOR'S AWARDS 2022 - THE GRANGE GANG

At last month's Mayor's Awards, The Grange Gang received recognition from the Mayor of Shrewsbury for the work they carry out with young people in the community.

The Grange Gang Youth Club is open to young people with additional needs aged 15-25.

They meet at the Grange Youth Centre on Friday evenings between 6.30-8.30pm.

This was a Youth Club which had been funded through Shropshire Council but, following cuts and staff redundancies, the team of

Youth Workers were committed to keeping it running.

We provided them with the venue for free and the Youth Workers have been instrumental in

seeking the resources to making sure this valuable facility continues.

Photo below L-R: Julie Brotherton and Tracey Summerton collecting The Mayor of Shrewsbury's Award in the Youth Category on behalf of The Grange Gang





# List of Forthcoming Council Meetings

In accordance with Schedule 12 10(2) (a) Local Government Act 1972, notice is hereby given of the following meetings of the Council.

**Tuesday 17 May 2022**

Planning Committee – 6pm

**Monday 6 June 2022**

Finance & General Purposes Committee – 6pm

**Tuesday 7 June 2022**

Planning Committee – 6pm

**Monday 27 June 2022**

Full Council – 6pm

**Tuesday 28 June 2022**

Planning Committee – 6pm

**Wednesday 6 July 2022**

Recreation & Leisure Committee – 6pm

**Thursday 7 July 2022**

Climate Change Standing Committee – 4.00pm

**Monday 18 July 2022**

Finance & General Purposes Committee – 6pm

Full details, including Agendas and paperwork, can be found on our website at:

**Shrewsbury Town Council  
List of Meetings**





# TEAM SHREWSBURY LATEST UPDATE

## TIME TO TALK



**Introducing the Anne Robson Helpline - if you or someone close to you is dying, you can talk to us.**

At the Anne Robson Trust we aim to be there to listen to anyone who faces dying or the imminent death of someone they care about. We know that facing the end of life can leave you feeling isolated and alone.

Being able to access support is so important. Gaining knowledge of what may happen towards the end of life and being prepared helps both the person dying and their loved ones to feel a sense of control.

Calls are free and confidential. **Call us on 0808 801 0688 - we have time to talk**

Please visit [www.annerobsontrust.org.uk/helpline-service](http://www.annerobsontrust.org.uk/helpline-service) to find out more.



## SHROPSHIRE COUNCIL'S WELFARE SUPPORT TEAM

### Financial assistance for Shropshire residents from Shropshire Council's Welfare Support Team

The Council's Welfare Support Team administers Local Welfare Provision schemes that can provide support for people who are struggling to meet their essential living costs:

For queries about this scheme, please call the team on 0345 678 9078 (option 1).

If you know of someone who needs help, please advise them to call our application line, on 0345 678 9078 (option 2).



## LAUNCH OF NEW INTERACTIVE MAP FOR UK EV CHARGING STATIONS

Whilst electric vehicles (EVs) are predicted to outsell diesel cars in the UK this year, the cost of EVs steadily drops and public charging points become more widespread, 'range anxiety' (the fear of running out of charge on the road) still holds many people back from switching to EVs.

Auto Trader has launched a fully-interactive map to help people find all public charging stations nearest to them.



The map covers the whole of the UK, which is useful for those planning long-distance EV journeys and allows for filtering according to charger type

compatibility (e.g. CHAdeMO) as well as locating fast charge and ultra-rapid charge stations if you're in a hurry.

The postcode finder can be used to easily find the nearest charging point and know how much it will cost to charge.

Aside from being a useful tool for electric car owners, the map also shares:

- A Frequently Asked Questions (FAQs) section for those new to EV public charging.
- Helpful tips and advice for those looking to install home chargers for their EVs.

Interactive Map for EV  
Chargers







# **SPIKING**

## **HAS CONSEQUENCES**

**PRISON SENTENCE**

**SEX OFFENDERS  
REGISTER**

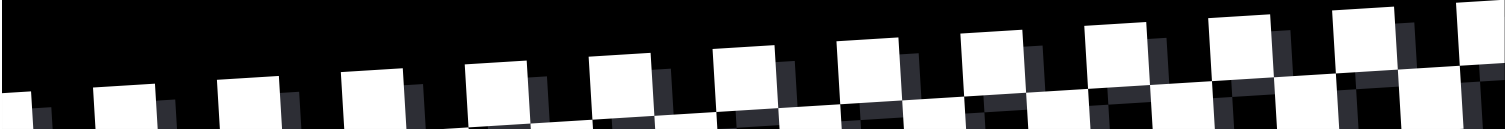
**STOP  
BEFORE  
YOU ACT**



**SECURITY &  
VULNERABILITY  
INITIATIVE**



**NPCC**  
National Police Chiefs' Council





# STREETSAFE INITIATIVE



StreetSafe is a pilot service for anyone to anonymously tell West Mercia Police about public places where you have felt or feel unsafe, because of environmental issues, including street lighting, abandoned buildings or vandalism and/or because of some behaviours, such as being followed or verbally abused.

This online reporting tool was introduced in a bid to tackle Violence Against Women and Girls (VAWG), and to inform local policing across the country to identify areas that need more attention from police, local authorities and other partner agencies.

Incidents that the public can report include signs of



drug abuse, derelict buildings, lack of street lighting, lack of CCTV etc.

**Please note:** 'StreetSafe' is not for reporting crime or incidents.

If something has happened to you or someone you know (including in public spaces online) you can call West Mercia Police on 101 or report online.

[Report Crime Online](#)



## SIGN UP TO NEIGHBOURHOOD MATTERS



Find out what's really happening in your area and keep in touch with West Mercia Police through their free messaging service.

The Neighbourhood Matters messaging system enables residents, businesses and community groups to keep in touch with local policing teams. You can receive updates on crimes, latest information on on-going incidents and learn more about what they're doing in your community.

You're invited to sign up and become a registered recipient of messages of information, crime alerts or witness appeals local to the area in which you live or work by email, text or telephone.

Don't worry, they won't bombard you with every incident. You can choose exactly the type of alert you wish to receive.

West Mercia Police would really like to hear from you, so why not ask your family, friends and colleagues to register too? Let's get talking!

Please note that this service is not for reporting crimes or incidents – to make a report please contact West Mercia Police via the [West Mercia Police website](#) or dial 999 in an emergency.

To sign up for Neighbourhood Matters, please go to:

[Neighbourhood Matters](#)



## RIVER SAFETY

### River Safety Links:

RLSS - <https://www.rlss.org.uk/dwp-ttrettfgsdg45354367hjksakyuiydauksh>

Home and Dry course - <https://westmerciasar.org.uk/homeanddry/free-water-safety-online-course/>

SFRS - <https://shropshirefire.gov.uk/water-safety>

### Educational Material:

RLSS - <https://www.rlss.org.uk/pages/category/water-safety-education-resources-for-7-9-year-olds>



**HAD A FEW TONIGHT?**

**DON'T WALK  
HOME ALONG  
THE RIVER.**

**IT'S NOT WORTH THE  
RISK.**

---

Cold water shock can set in immediately even when temperatures are warmer, leaving you unable to rescue yourself.





**Shrewsbury**  
Town Council

**Allotments  
Public Open Space  
Leisure & Recreation  
Play Areas  
Shrewsbury in Bloom  
Christmas Lights  
Events & Festivals  
Footway Lighting  
Mayor of Shrewsbury & Civic Events  
Bus Shelters  
Youth Services  
Memorials on Town Council Assets  
Toilet Facilities in Shrewsbury**

**Telephone: 01743 281010  
Email: [enquiries@shrewsburytowncouncil.gov.uk](mailto:enquiries@shrewsburytowncouncil.gov.uk)**

## **Which Council does What?**

**Do you know which Council empties your dustbins, plants and maintains the flowers around the town, or is responsible for education and social care in the county?**

**We know it can be confusing and it's not always easy to find out who is responsible for what. This information is designed to help point you in the right direction.**



**Shropshire**  
Council

**Education  
Housing  
Council Tax & Benefits  
Waste Collection & Re-cycling  
Social Care  
Public Rights of Way  
Highways, Gritting, Street Lights & Potholes  
Towpath gates & Cleansing of towpath  
Public Protection  
Planning  
Libraries  
Leisure & Recreation  
Shrewsbury Shopping Centres  
Museum & Art Gallery / Visitor Information Centre  
Youth Provision  
Car Parks & Blue Badges  
Bus Passes**

**Telephone: 0345 678 9000  
Email: [customer.service@shropshire.gov.uk](mailto:customer.service@shropshire.gov.uk)**





# SHREWSBURY TOWN COUNCILLORS

 shrewsbury\_town\_council

 www.facebook.com/shrewsburytowncouncil

 @ShrewsburyTC

## Bernie Bentick MEOLE WARD

The Gables  
Vicarage Road  
Shrewsbury  
SY3 9EZ



[Bernie.bentick@shrewsburytowncouncil.gov.uk](mailto:Bernie.bentick@shrewsburytowncouncil.gov.uk)

## Rosemary Dartnall COLUMN WARD

Byways  
2 Luciefelde Road  
Shrewsbury  
SY3 7LB  
Tel: 07890 055168



[rosemary.dartnall@shrewsburytowncouncil.gov.uk](mailto:rosemary.dartnall@shrewsburytowncouncil.gov.uk)

## Julian DG Dean PORTHILL WARD

10 Ellesmere Road  
Shrewsbury  
SY1 2PJ  
Tel: 07939121607



[julian.dean@shrewsburytowncouncil.gov.uk](mailto:julian.dean@shrewsburytowncouncil.gov.uk)

## Mary Davies ABBEY WARD

69a Yew Tree Close  
Shrewsbury  
Shropshire  
SY1 2UR



[Mary.davies@shrewsburytowncouncil.gov.uk](mailto:Mary.davies@shrewsburytowncouncil.gov.uk)

## Phil J Gillam SUTTON & REABROOK WARD

26 Brightwell,  
Reabrook, Shrewsbury  
SY3 7TQ  
Tel: 07527054143



[phil.gillam@shrewsburytowncouncil.gov.uk](mailto:phil.gillam@shrewsburytowncouncil.gov.uk)

## Nat J Green QUARRY & COTON HILL WARD

94 St Michaels Street  
Shrewsbury  
SY1 2HE  
Tel: 07971043586



[nat.green@shrewsburytowncouncil.gov.uk](mailto:nat.green@shrewsburytowncouncil.gov.uk)

## Kate Halliday Belle Vue Ward

14 Greyfriars Road  
Shrewsbury  
SY3 7EP  
Tel: 07458 117536



[kate.halliday@shrewsburytowncouncil.gov.uk](mailto:kate.halliday@shrewsburytowncouncil.gov.uk)

## Chris Lemon RADBROOK WARD

10 Cross Roads  
Bayston Hill  
Shrewsbury  
SY3 0EN  
Tel: 07908 904163



[Chris.lemon@shrewsburytowncouncil.gov.uk](mailto:Chris.lemon@shrewsburytowncouncil.gov.uk)

## Pam Moseley MONKMOOR WARD

116 Underdale Road  
Shrewsbury  
SY2 5EF  
Tel: 07968480982



[pam.moseley@shrewsburytowncouncil.gov.uk](mailto:pam.moseley@shrewsburytowncouncil.gov.uk)

## Alan Mosley CASTLEFIELDS & DITHERINGTON WARD

11 Queen Street  
Castlefields  
Shrewsbury  
SY1 2JT  
Tel: 01743 231834



[alan.mosley@shrewsburytowncouncil.gov.uk](mailto:alan.mosley@shrewsburytowncouncil.gov.uk)

## Kevin J Pardy SUNDORNE WARD

13 Sundorne Avenue  
Shrewsbury  
SY1 4JL  
Tel: 01743 242350



[kevin.pardy@shrewsburytowncouncil.gov.uk](mailto:kevin.pardy@shrewsburytowncouncil.gov.uk)

## Alex G Phillips BAGLEY WARD

c/o Shrewsbury TC  
Riggs Hall, Castle Gates  
Shrewsbury  
SY1 2AS

Tel: 07957468782



[alex.phillips@shrewsburytowncouncil.gov.uk](mailto:alex.phillips@shrewsburytowncouncil.gov.uk)

## Elisabeth Roberts HARLESCOTT WARD

c/o Shrewsbury & Atcham  
Labour Party  
Morris Hall  
Bellstone  
Shrewsbury  
SY1 1JB  
Tel: 07859 578 107



[elisabeth.roberts@shrewsburytowncouncil.gov.uk](mailto:elisabeth.roberts@shrewsburytowncouncil.gov.uk)

## David G Vasmer UNDERDALE WARD

15 High Ridge Way  
Radbrook  
Shrewsbury  
SY3 6DJ  
Tel: 07738111023



[david.vasmer@shrewsburytowncouncil.gov.uk](mailto:david.vasmer@shrewsburytowncouncil.gov.uk)

## Alex Wagner Bowbrook Ward

11A Betton Street  
Shrewsbury  
SY3 7NY  
Tel: 07890 055161



[Alex.wagner@shrewsburytowncouncil.gov.uk](mailto:Alex.wagner@shrewsburytowncouncil.gov.uk)

## Becky Wall BATTLEFIELD WARD

34 Alberbury Drive  
Sundorne Grove  
Shrewsbury  
SY1 4TA  
Tel: 07583120863



[becky.wall@shrewsburytowncouncil.gov.uk](mailto:becky.wall@shrewsburytowncouncil.gov.uk)

## Rob Wilson COPTHORNE WARD

The Grove  
Shrewsbury School  
Shrewsbury  
SY3 9AQ  
Tel: 07966 133598



[rob.wilson@shrewsburytowncouncil.gov.uk](mailto:rob.wilson@shrewsburytowncouncil.gov.uk)

Riggs Hall  
The Library  
Castle Gates  
Shrewsbury  
SY1 2AS

01743 281010

[enquiries@shrewsburytowncouncil.gov.uk](mailto:enquiries@shrewsburytowncouncil.gov.uk)

