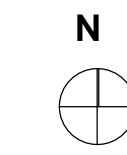


THIS DRAWING IS BASED ON GEOFFREY PERRY ASSOCIATES LIMITED SURVEY S219-1007



EXTERNAL WORKS LEGEND

- Existing trees retained
- Existing trees removed
- Hedges planted as minimum pot size of 3 litres
- 1.8m high close board privacy panel extending 1.8m from the rear of the dwelling. The remainder of the garden shall be fenced with 1500mm high timber panels securely fixed within concrete slotted posts on 300mm concrete gravel boards, overall height 1800mm min.
- 1.8m high close board timber gates with galvanised steel catch, hasp and staple for padlock. Clear width 900mm.
- 1800mm high brickwork boundary wall topped with brick on edge.
- 2 No. Broxap Harrogate Cycle Stands, Ref: 884W/GH3, 790mm wide, 800mm high, for 4 cycles, all powder coated, colour: TBA. Shelter over as detail
- Broxap Wardale bicycle shelter for 4 bicycles with 2 hoop Sheffield rack. L = 2000, W = 2140, H = 2150.
- Lockable external storage 2400x1800mm
- 240 litre general waste bin
240 litre garden waste bin
Recycle bin
- 1100 litre bins as agreed with local authority
- 600 x 600mm buff concrete paving slabs, 1200mm² flat landing to entrance doors with 900mm wide private paths or 1200mm wide shared paths, rear patios 1800mm deep with additional paving for bin & shed access.
- Block paving, colour TBC.
Parking spaces to be demarcated with contrasting block paving.
- Tarmac
- Rotary clothes dryer
- Existing 6m high posts with ball-stop netting.
Existing 2.5m high ball-stop fencing.
New 13m high posts at 18m centres with ball-stop netting.
- Proposed adopted lighting column
Proposed private lighting column
- Landscaping adjacent to parking spaces & within visibility splays must have a mature growth height or be maintained at no higher than 500mm.
- All landscaping to be in accordance with Landscape Architects details
- Refer to structural engineers drawing for extent of retaining concrete gravel boards and retaining walls.



CONSTRUCTION

E	09.08.2022	UPDATED WITH POST DEMO SURVEY AS BASE.	PNW
D	08.07.2022	CONSTRUCTION STATUS.	PNW
C	09.07.2022	EXTERNAL LIGHTING ADDED.	PNW
A	26.01.2022	PAVING AMENDED ALL CLERE RESTRICTION.	PNW
	14.12.2021	BLOCK PAVING SPEC AMENDED.	PNW

REV	DATE REVISED	REVISION	REV BY

OAKLEY ARCHITECTS
 28 HILLWOOD ROAD
 SUTTON COLDFIELD
 WEST MIDLANDS
 B75 5QL
 T: 0121 238 0683
 E: design@oakleyarchitects.co.uk
 www.oakleyarchitects.co.uk

CLIENT: Bromford Housing Group

PROJECT: Albert Road, Shrewsbury

DRAWING TITLE: External Works

DRAWING SCALE: 1:200 (A1) DATE DRAWN: 15.10.2021

DRAWN BY: PNW CHECKED BY: Simon Oakley

JOB NUMBER: 201905 DRAWING NUMBER: 30E