



Martyn's Law

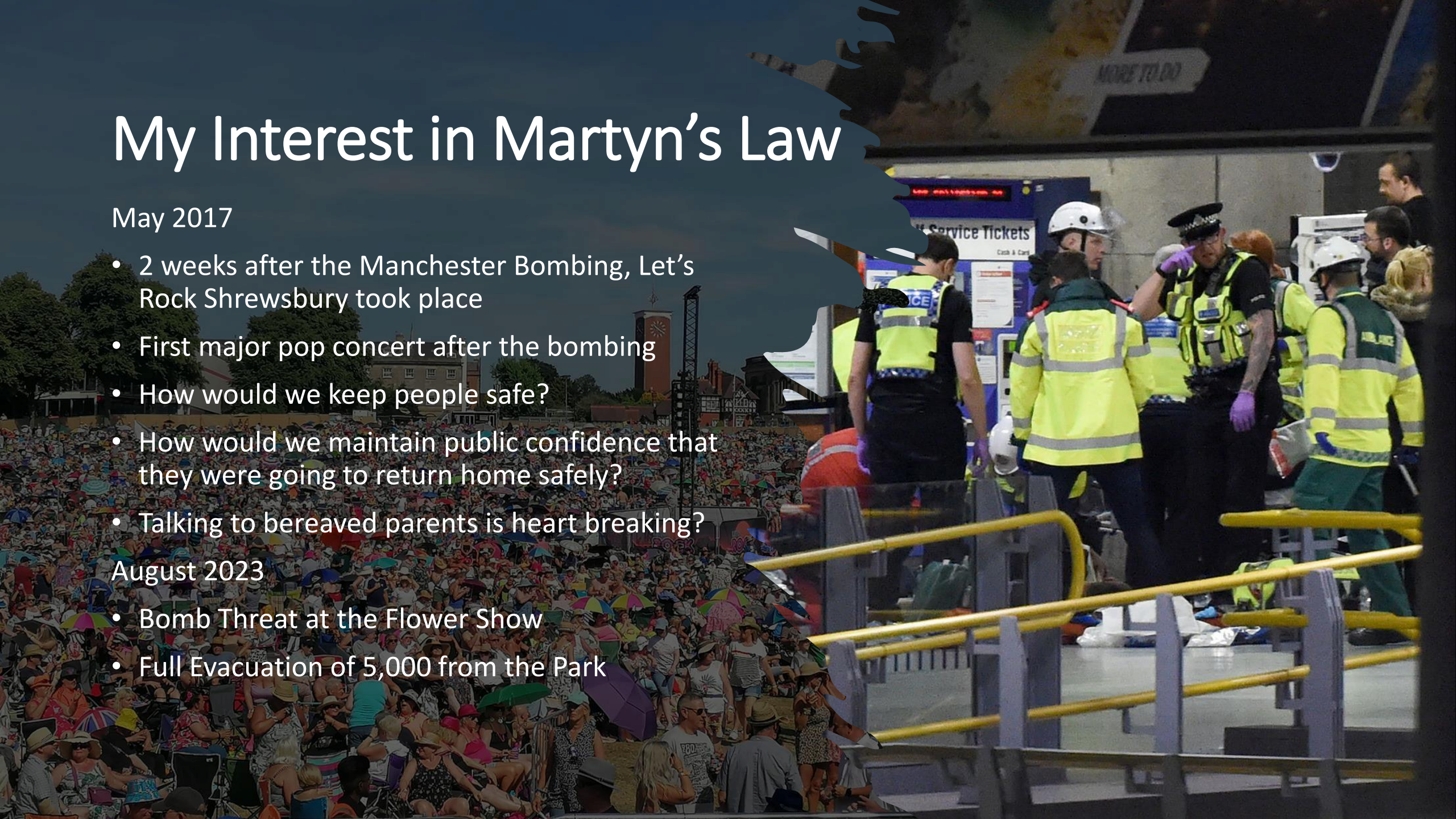
My Interest in Martyn's Law

May 2017

- 2 weeks after the Manchester Bombing, Let's Rock Shrewsbury took place
- First major pop concert after the bombing
- How would we keep people safe?
- How would we maintain public confidence that they were going to return home safely?
- Talking to bereaved parents is heart breaking?

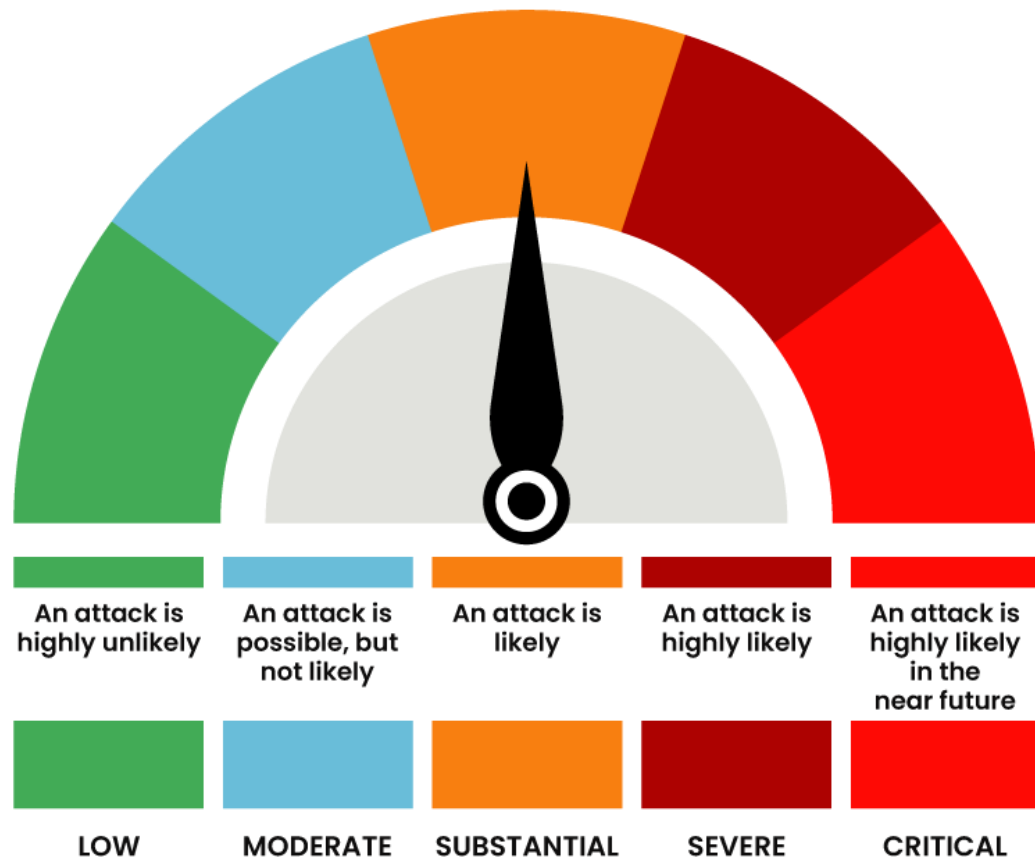
August 2023

- Bomb Threat at the Flower Show
- Full Evacuation of 5,000 from the Park



UK Threat Level – An attack is likely

There's no reason why it should happen in our Parish.....but there's no reason why it shouldn't



Building Response Level	Description	UK threat Level
EXCEPTIONAL	Maximum protective security measures to meet specific threats and to minimise vulnerability and risk	CRITICAL
HEIGHTENED	Additional and sustainable protective security measures reflecting the broad nature of the threat with specific business vulnerabilities and judgements on acceptable risk	SEVERE AND SUBSTANTIAL
NORMAL	Routine protective security measures appropriate to the your event	MODERATE AND LOW

Martyn's Law / Protect Duty

What will that
mean for
Parish
Councils

- That they engage with freely available counter terrorism advice and training
- That they conduct vulnerability assessments of their operating places, spaces & events
- That they mitigate risks created by the vulnerabilities identified
- That they develop and implement security plans

Scope of Martyn's Law Bill

- Qualifying Premises
 - Standard – 100-799 capacity
 - Enhanced – 800+ capacity
- Qualifying Public Events
 - 800+ capacity
 - must be accessible by members of the public, who must be there by **express permission** only. The definition extends to free as well as paid-for events.
- Registration with a Regulator
- Duty to Co-ordinate
- Duty to Co-operate
- Criminal Sanctions

[Terrorism \(Protection of premises\) draft bill: overarching documents - GOV.UK \(www.gov.uk\)](https://www.gov.uk/government/uploads/system/uploads/attachment_data/file/672222/Terrorism_(Protection_of_premises)_draft_bill_overarching_documents.pdf)

Scope of Parish Councils

Retail Premises

Entertainment Venues

Sports Grounds

Libraries

Museums

Archives

Conference & Exhibition Spaces

Village & Community Halls

Indoor Markets

Parks & Open Spaces (which host events within scope of this bill)

How does it affect Shrewsbury Town Council

**3 Community
Centres**

Market Hall

4 Major Events

Events within a
larger capacity
building we hire



Lets Rock

80s Concert in Quarry Park owned by Shrewsbury Town Council operated under Town Council's Premises Licence attracting 13000 people



Remembrance Parade

Annual Remembrance Parade, 1000 in the parade, 3000 watching – joint operation between Shrewsbury Town Council & RAF Shawbury under Town Council overall control. Road Closures and dynamic counter terrorism assessment given attendees



Carols in the Square & Lights Switch On

Sing-along carol service broadcast on the BBC Network nationwide, 2500 visitors, confined streets – run by Shrewsbury Town Council under Town Centre Premises Licence with Road Closures

Poll of Clerks by SLCC

70% of respondents know about Martyn's Law

10% of respondents had read the Bill

60% of respondents had village halls with a capacity 100-799

80% of respondents managed open air events

80% of respondents carried out Risk Assessments for events

63% of respondents wrote Event Management Plans

36% of respondents engaged with Safety Advisory Groups

7% of respondents had received counter terrorism training

3% of respondents had experienced terrorist/extremist related activity

78% of respondents were not confident in implementing terrorism plans

96% of respondents welcomed training

Issues Raised by SLCC

[SLCC | Martyn's Law – Home Affairs Committee Report](#) protectUK



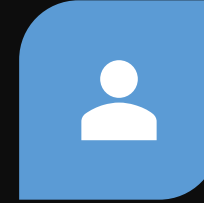
CAPACITY LIMITS –
ARE THEY TOO LOW



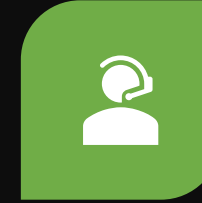
NEED FOR
PROPORTIONALITY



CLARITY ON
TERMINOLOGY



WHO WILL THE
REGULATOR BE



TRAINING &
SUPPORT



FINANCIAL IMPACT



DAWNING REALITY
OF OVERSTRETCHED
EMERGENCY
SERVICES



WIDER
IMPLICATIONS OF
PARISH COUNCILS
KEEPING THE PUBLIC
REALM SAFE

SLCC Ask of the Home Office



To actively engage with both SLCC and NALC to understand and appreciate the impact of the new legislation on the parish, town and community council sector;



To review the financial impact on the parish, town and community council sector;



To work with SLCC and NALC on a joint package to support proactive rollout;



To continue engagement with SLCC and NALC on other Home Office related matters (Safer Streets, County Lines, Role of CSPs, Engagement with PCCs etc) that many of our members have an active involvement in as practitioners

Where are we now

- Home Affairs Select Committee panel met to receive representations
 - Report has been issued [Pre-legislative scrutiny of the Terrorism \(Protection of Premises\) Draft Bill - Reports, special reports and government responses - Committees - UK Parliament](#)
 - Awaiting Home Office Response
 - Figen Murray is urging everyone to contact their MP to reinforce the need for the legislation. She also presented to the SLCC Conference.
 - Martyn's Law was mentioned in the King's Speech
 - The Question is – **If there was a necessity to prepare legislation because there is a Terrorism risk, why wouldn't we start putting measures in place now?**
-

Standard Tier Consultation



Home Office

Terrorism (Protection of Premises) Bill - Standard Tier

Government consultation

This consultation begins on 5 February 2024

This consultation ends on 18 March 2024

Overview of Revised Standard Tier requirements

18) In summary, those responsible for Standard Tier premises³ must:

- **Notify the Regulator that they are, or have become, responsible for premises within scope of the Bill (and so subject to the relevant requirements).** This remains broadly in line with previous requirements.
- **Have in place procedural measures that could be expected to reduce, so far as reasonably practicable, the risk of physical harm to individuals at the premises in the event of an attack.** These relate only to the procedures to be followed by people working at the premises in the event of an attack occurring or being suspected as about to occur. Details on the procedures required are set out at paragraph 22. As the procedural measures are about procedures for responding to an attack or suspected attack, it is not expected or required that physical alterations be undertaken or additional equipment purchased for Standard Tier premises.
- In contrast to the published draft Bill, there is **no requirement to complete a specified form (the 'Standard Terrorism Evaluation') for Standard Tier premises or ensure that people working at the premises are given any specific training.** However, as part of putting in place the procedural measures, workers will need to be sufficiently instructed or trained to carry them out effectively.

Standard Tier Consultation – Sector Thoughts



Terrorism (Protection of Premises) Bill - Standard Tier Government consultation

This consultation begins on 5 February 2024

This consultation ends on 18 March 2024

- Is the 100+ capacity still too low?
- Is there a difference between the capacity of the premises & the average capacity of hirers?
- Is removing compulsory training bad for overall Terrorism awareness?
- Would we prefer a prescriptive Terrorism Evaluation Form?
- What support does the Sector need to provide to enable Councils to meet the legislation?

[SLCC | Home Office announces more free webinars for Martyn's Law standard tier consultation](#)
[NALC and SLCC issue rapid response survey on Martyn's Law - News](#)

Standard Tier Consultation – Sector Training Thoughts



Terrorism (Protection of Premises) Bill **- Standard Tier** Government consultation

This consultation begins on 5 February 2024

This consultation ends on 18 March 2024

- Need to cater for Large & Small
 - Standard Tier & Enhanced Tier
 - Indoors & Outdoors

 - Webinars
 - Standard Tier Template & Sector Specific Guidance Notes
 - Risk Assessments & Fire Risk Assessments
 - Emergency Plans
 - Testing Plans – Desktop Exercises
-

We already have significant Risks & Responsibility

Health & Safety At Work Act 1974 - Employers must protect the 'health, safety and welfare' at work of all their employees, as well as others on their premises, including temps, casual workers, the self-employed, clients, visitors and the general public

S17 Crime & Disorder Act 1998 – The Council must have due regard to their likely effect on Crime & Disorder and to do all it reasonably can to prevent crime and disorder (which includes terrorism).

Occupiers Liability Act 1957 – An occupier of premises is under a duty to their lawful visitors to take such care as in all the circumstances of the case is reasonable to see that the visitor will be reasonably safe when using the premises for the purposes for which they are invited or permitted by the occupier to be there.

S26 Counter Terrorism & Security Act 2015 – There is a duty on specified authorities in the exercise of their functions to have due regard to the need to prevent people from being drawn into terrorism. A Parish Council is not listed in the act but is duty bound by its work with partners in local efforts to prevent people from being drawn into terrorism.

S4 Licensing Act 2003 – details the 4 key objectives on licensing authorities and any organisation licensed under the act; these include:

- Prevention of Crime & Disorder
- Public Safety
- Prevention of Public Nuisance
- Protection of Children from Harm

M	MAJOR INCIDENT	Has a major incident already been declared / Yes / No / if no, complete [T]RAWL m
E	EXACT LOCATION	What is the exact location or geographical area of the incident?
T	TYPE OF INCIDENT	What kind of incident is this?
H	HAZARDS	What hazards or potential hazards can be identified?
A	ACCESS	What are the best routes for access and egress?
N	NUMBER OF CASUALTIES	How many casualties are there, and what condition are they in?
E	EMERGENCY SERVICES	Which and how many emergency response agencies/personnel are present or are already present?

CONTACT

CHECK AND NOTIFY

ACTION COUNTER TERRORISM

UNATTENDED ITEMS: LOST... or SUSPICIOUS?



H

Hidden?

- Has it been concealed or hidden from view?
- Does the unlikely to be left in locations such as this? When any unattended item will be removed quickly.



O

Obviously suspicious?

- Does it pose a risk, (e.g. fire, bomb, liquid or gas)?
- Do you think the item poses an immediate threat to life?



T

Typical?

- Is the item typical of what you would expect to find in this location?
- Does the item pose a risk to life or limb?

If after applying the HOT protocols you still believe the item to be suspicious, call 999.



NaCTSO
National Counter Terrorism Security Office



BRITISH TRANSPORT POLICE

Following National Guidance

National organisations have great resources available – don't reinvent the wheel



**Do we understand the current risk
associated with our premises?**

**We are already adept at developing Risk
Assessments & Fire Risk Assessments**

Isn't this an extension to that?

What threats
are we
protecting our
sites /
premises /
events from?



bladed weapons



firearms



vehicle as a weapon



fire as a weapon



explosives



chemical, biological or radiological
materials

Emergency Planning Measures



DEVELOP OUR OWN
LOCAL EMERGENCY
PLAN



IDENTIFY EVACUATION
ROUTES



THINK ABOUT THOSE
LOCAL RESOURCES
THAT ARE AVAILABLE



WHICH BUILDINGS
COULD BE USED AS
REST CENTRES



WHO HAS THE
KNOWLEDGE



What Measure do we take?

- Reasonable
- Proportionate
- Viable
- Interoperable
- Understandable



CCTV
in Operat





Are we, our staff, our contractors & our volunteers trained?

“Relevant Workers”

[NaCTSO - Counter Terrorism Awareness - Powered By Frog \(protectuk.police.uk\)](https://protectuk.police.uk)



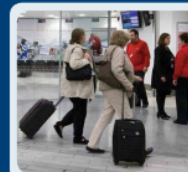
Suspicious Package

HOT Principles

- Presence of a firearm or bladed weapon
- Frequent sighting of the same vehicle either parked or moving
- Unusual, dangerous or erratic driving
- Vehicles parked or driven in an unusual location
- Bulky or non-typical clothing
- Bags, cases or other items that are out of place
- Unusual items or combinations of items
- Items that show signs of tampering
- Unusual odours.

[Incident procedures](#) | [ProtectUK](#)

UNATTENDED ITEMS: LOST... or **SUSPICIOUS?**



H

Hidden?

- Has it been concealed or hidden from view?
- Bombs are unlikely to be left in locations such as this – where any unattended item will be noticed quickly.



O

Obviously suspicious?

- Does it have wires, circuit boards, batteries, tape or putty-like substances?
- Do you think the item poses an immediate threat to life?



T

Typical?

- Is the item typical of what you would expect to find in this location?
- Most lost property is found in locations where people congregate.

If after applying the HOT protocols you still believe the item to be suspicious, call 999.

NaCTSO
National Counter Terrorism Security Office



**Understanding
suspicious
behaviour can
provide an
early indication
of a threat.**



Suspicious Behaviour

WHAT

- Do we actively look for individuals or groups undertaking suspicious activity at our site?
- What would suspicious behaviour at our site look like?
- Have we identified locations at our site where suspicious activity is likely to go unobserved?



What - are they doing?



How - are they behaving?



Alone - or acting with others?



Threat - what type do they pose?



See, Check and Notify



- SEE – understand what hostile reconnaissance is and how to spot it
- CHECK – know what to do if you suspect a hostile reconnaissance or identify suspicious activity
- NOTIFY – who you should tell and what you should tell them

Employee Vigilance through the Power of Hello

Alert employees can spot suspicious activity and report it



Used effectively, the right words can be a powerful tool. Simply saying “Hello” can prompt a casual conversation with unknown individuals and help you determine why they are there. **The OHNO approach – Observe, Initiate a Hello, Navigate the Risk, and Obtain Help** – helps employees observe and evaluate suspicious behaviors, empowers them to mitigate potential risk, and obtain help when necessary.

The **OHNO** approach to risk prevention relies on reasonable persons to make these observations to properly detect and report terrorism/criminal-related suspicious behavior.



For additional **Power of Hello** resources please visit cisa.gov/employee-vigilance-power-hello.

DHS' "If You See Something, Say Something®" campaign provides additional information on how to recognize and report the indicators of terrorism-related suspicious activity.

Terrorist Attacks



IN THE RARE EVENT OF
a firearms or weapons attack



RUN - to a place of safety. This is a far better option than to surrender or negotiate. If there's nowhere to go, then...

HIDE - Remember to turn your phone to silent and turn off vibrate. Barricade yourself in if you can.

TELL - the police by calling 999 when it is safe to do so.



[What You Can Do |
Counter Terrorism
Policing](#)

At the moment, the issue of terrorist attacks is regularly in the news. But it's been on our agenda for much longer.

The police and security service have been working constantly to foil terrorist attacks for years, not months.

But we are not complacent about keeping you safe.

Due to events in the UK and abroad, people are understandably concerned about a firearms or weapons attack. These attacks are very rare but in the event of such an attack, it helps to be prepared.

Remember, attacks of this nature are still very rare in the UK.

So stay safe, and just remember the words:

RUN. HIDE. TELL.

To watch the film, visit:

www.protectuk.police.uk



Information is vital. If you see or hear something that could be terrorist related, trust your instincts and call the confidential Anti-Terrorist hotline on **0800 789 321**.

Our specially trained officers will take it from there.

Your call could save lives.

Always in an emergency, call **999**.

PLAN TO PREPARE PREPARE TO PROTECT

This platform is undergoing continuous development to support organisations to evaluate and manage risk posed by terrorism.

Get Started →



<https://www.protectuk.police.uk/>

APPS

