

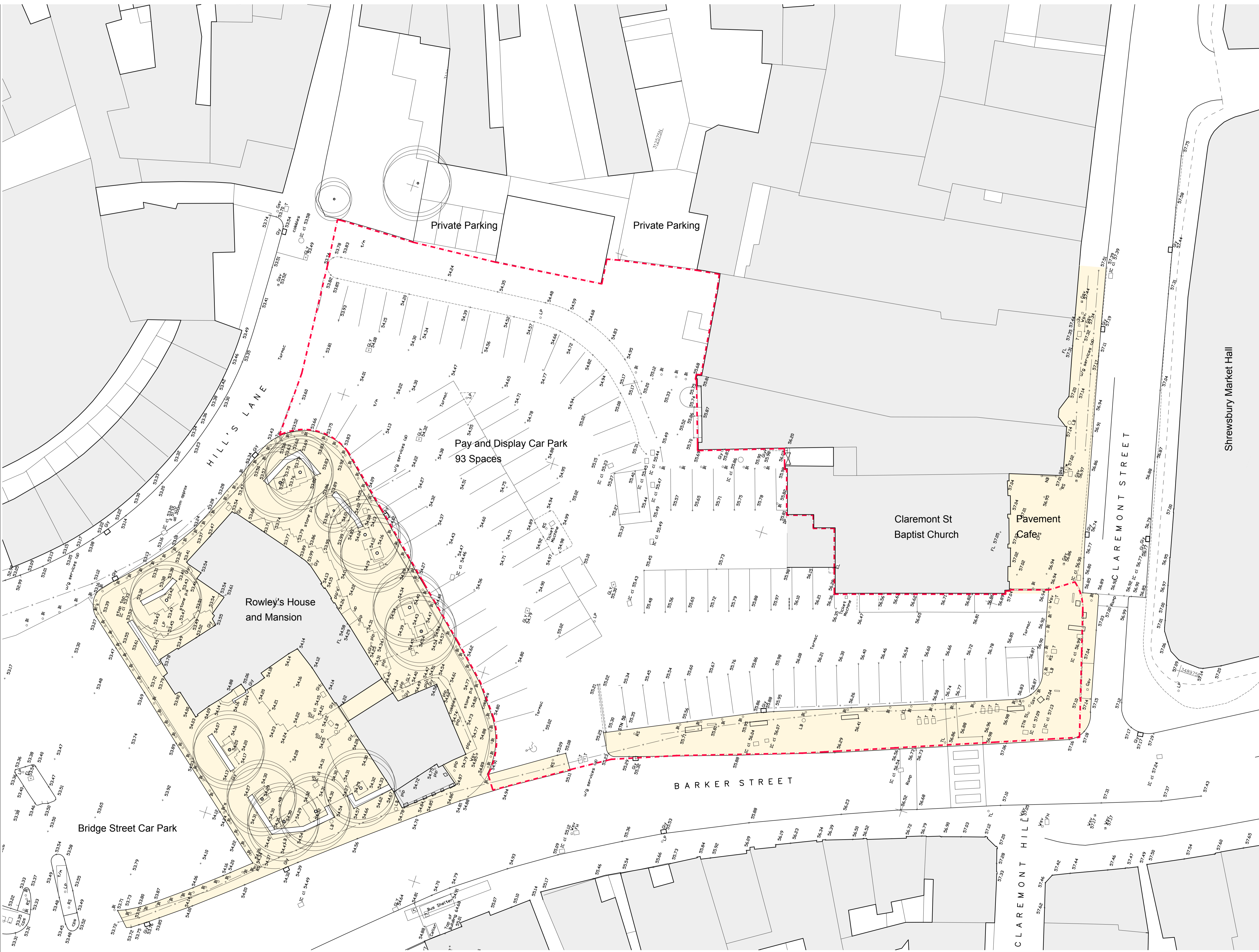
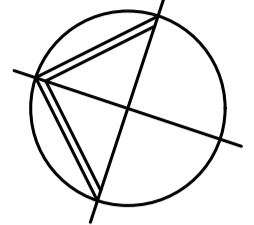


PROPOSED HOTEL BARKER STREET SHREWSBURY

Bryan Hamilton
AHR Architects Ltd
Shrewsbury

Notes

Ordnance Survey (C) Crown Copyright 2019
 All rights reserved
 Licence Number 100022432



P9	Boundary altered to include bin store to rear of Claremont Church	Apr '22	BRH	BRH
P8	Third Floor Apartments removed Increase from 72 to 83 bedrooms	Mar '22	BRH	BRH
P7	Third Floor Apartments added Increase from 69 to 72 bedrooms	Feb '22	BRH	BRH
P6	Ex Pavement alterations added	Dec '21	BRH	BRH

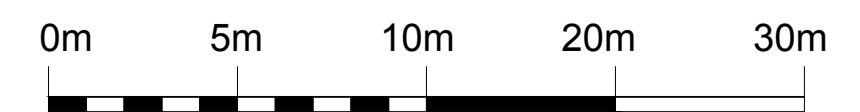
Rev	Description	Date	Dr by	App by
original	BRH	Mar '21	BRH	BRH

AHR Architects Ltd
 First Floor
 Victoria House
 Victoria Quay
 Shrewsbury
 SY1 1RH
 United Kingdom
 T: +44(0)174 2523000
 F: +44(0)174 2523001
 E: info@ahr-global.com
 www.ahr-global.com

client	Morris Property Ltd Welsh Bridge, Shrewsbury
project	Proposed Hotel Barker Street, Shrewsbury
drawing	Existing Site Plan

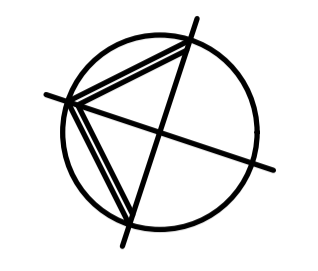
project number	AR - 2021- 00481.000	scale	1:200 @A1
drawing number	L - 001	rev	P9
		Issue Status	Planning

Existing Site Plan
 Scale 1:200 @ A1



Notes

Ordnance Survey (C) Crown Copyright 2019
 All rights reserved
 Licence Number 100022432



 Site Boundary

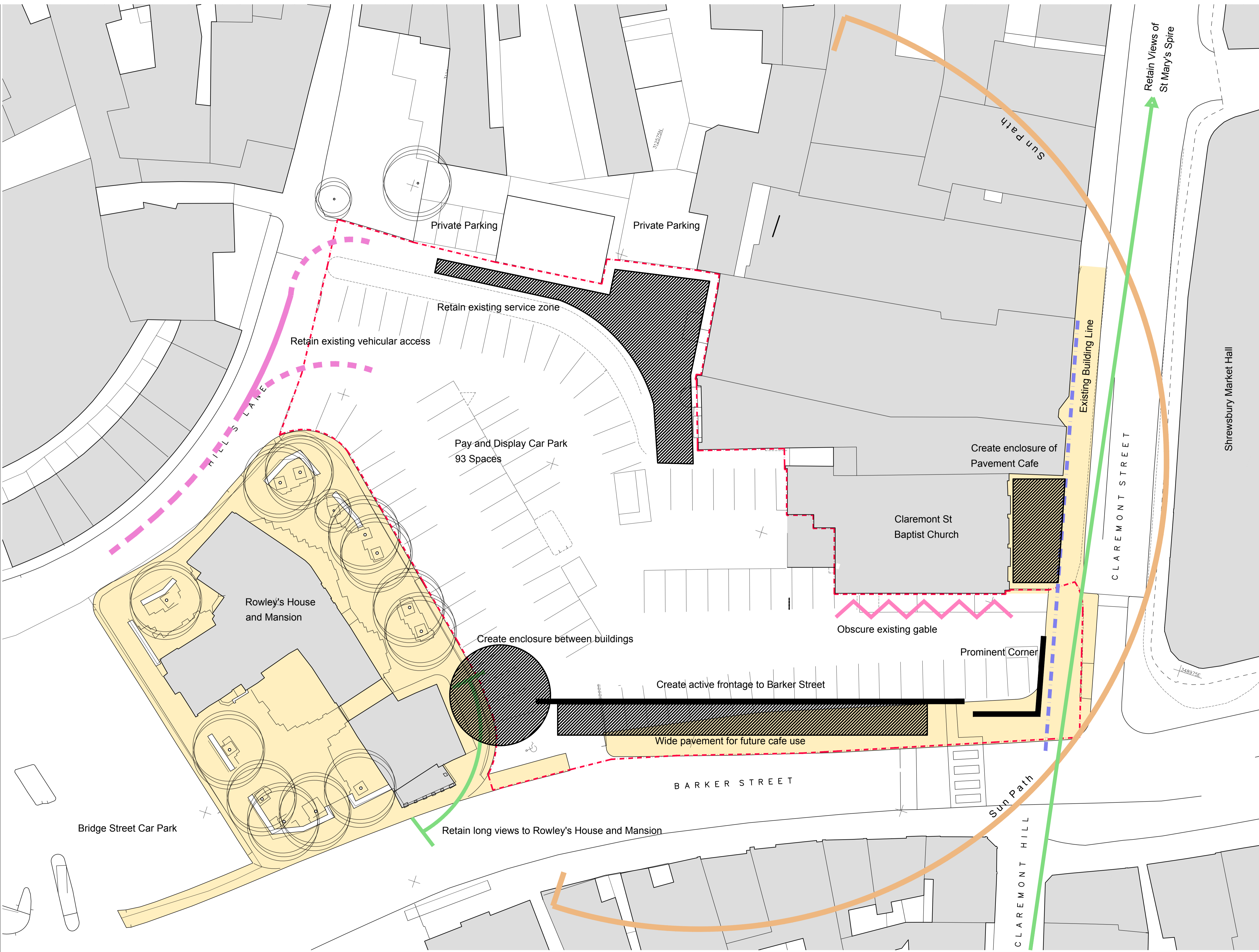
Rev	Description	Date	Dr by	App by
P9	Boundary altered to include bin store to rear of Claremont Church	Apr '22	BRH	BRH
P8	Third Floor Apartments removed Increase from 72 to 83 bedrooms	Mar '22	BRH	BRH
P7	Third Floor Apartments added Increase from 69 to 72 bedrooms	Feb '22	BRH	BRH
P6	Ex Pavement alterations added	Dec '21	BRH	BRH

original by	date created	Approved by
BRH	Mar '21	BRH

AHR AHR Architects Ltd
 First Floor
 Victoria House
 Victoria Quay
 Shrewsbury
 SY1 1RH
 United Kingdom
 T: +44(0)174 3283000
 F: +44(0)174 3257117
 E: shrewsbury@ahr-global.com
 www.ahr-global.com

client	Morris Property Ltd Welsh Bridge, Shrewsbury
project	Proposed Hotel Barker Street, Shrewsbury
drawing	Site analysis

project number	scale
AR - 2021- 00481.000	1:200 @A1
drawing number	rev
L - 000	P9
	Issue status
	Planning

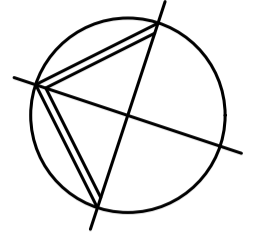


Existing Site Plan
 Scale 1:200 @ A1



Notes

Ordnance Survey (C) Crown Copyright 2019
 All rights reserved
 Licence Number 100022432



Accommodation Schedule

Retail Unit 1	123 sqm		
Retail Unit 2	175 sqm		
Retail Unit 3	138 sqm		
Hotel			
Room Type	Floor		
	1	2	3
Squeeze Double Room	17	17	17
Squeeze Family Room	8	8	
Squeeze Family SuperRoom			4
Accessible Room	2	1	
Accessible SuperRoom			1
Standard Double Shower Room	2	2	
Standard Double Shower SuperRoom			2
Standard Family Room		1	
Standard Family SuperRoom			1
			83

P10	Bin Store /ramps to Travelodge relocated. Main Stair enclosed at GF. Plant Rm door to Linen Intake removed	May '22	BRH	BRH
P9	Boundary altered to include bin store to rear of Claremont Church Travelodge layout altered to suit comments issued 06/04/22	Apr '22	BRH	BRH
P8	Third Floor Apartments removed Increase from 72 to 83 bedrooms	Mar '22	BRH	BRH
P7	Third Floor Apartments added Increase from 69 to 72 bedrooms	Feb '22	BRH	BRH
P6	Ex Pavement alterations added	Dec '21	BRH	BRH

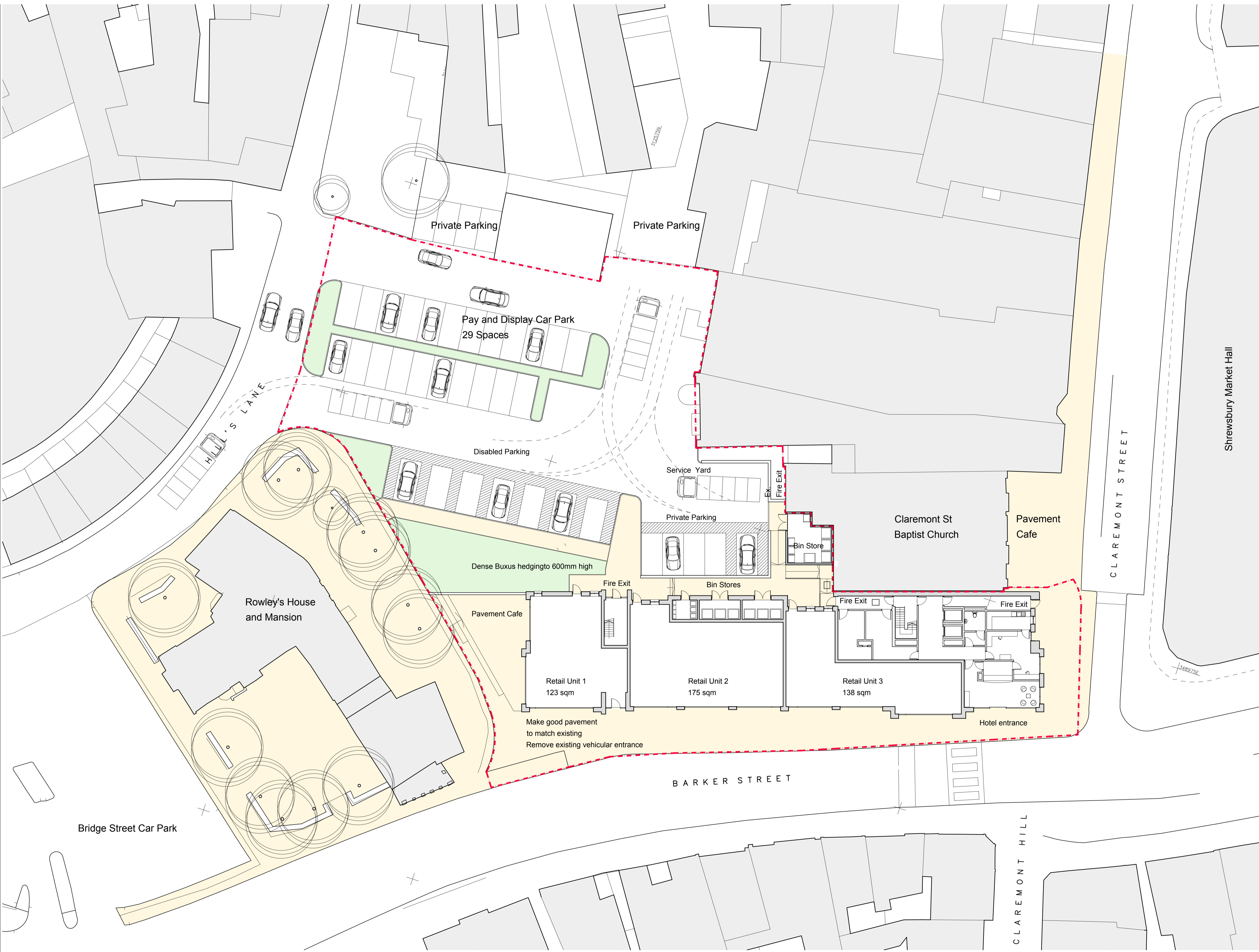
Rev	Description	Date	Dr by	App by
original	BRH	Mar '21	BRH	BRH

AHR Architects Ltd
 First Floor
 Victoria House
 Victoria Quay
 Shrewsbury
 SY1 1RH
 United Kingdom

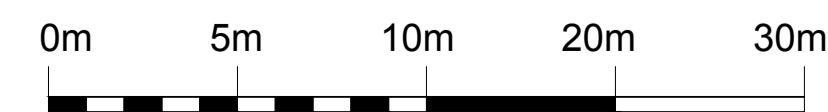
T: +44(0)174 5283000
 F: +44(0)174 5283000
 @ahr-global.com
 www.ahr-global.com

client	Morris Property Ltd Welsh Bridge, Shrewsbury
project	Proposed Hotel Barker Street, Shrewsbury
drawing	Proposed Site Plan

project number	AR - 2021- 00481.000	scale	1:200 @A1
drawing number	L - 002	rev	P10
		issue status	Planning



Proposed Site Plan
 Scale 1:200 @ A1



Pay and Display Car Park
29 Spaces

Service Yard

Dense Buxus hedging to 600mm high

Pavement Cafe

Retail Unit 1
123 sqm

Retail Unit 2
175 sqm

Retail Unit 3
138 sqm

Make good pavement
to match existing

Remove existing vehicular entrance

BARKER STREET

Claremont St
Baptist Church

Existing
Pavement
Cafe

Bin Store

1:20 max ramp
1700 wide

1:20 max ramp
1500 wide

1:20 max ramp
1500 wide

Dropped Kerb

Fire Exit / Deliveries
1000 clear opening min

Main Stair
Fire Escape

Lift

Lift

Accessible
Toilet

Fire Exit

Vending Prep

Plant

Linen Store

Buried ramp 0.001

Lift Lobby

Reception

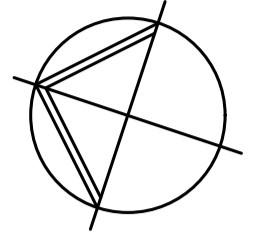
Vending

Waiting

Hotel entrance

Notes

Ordnance Survey (C) Crown Copyright 2019
All rights reserved
Licence Number 100022432



Site Boundary

P10	Bin Store /ramps to Travelodge relocated. Main Stair enclosed at GF. Plant Rm door to Linen Intake removed	May '22	BRH	BRH
P9	Boundary altered to include bin store to rear of Claremont Church Travelodge layout altered to suit comments issued 06/04/22	Apr '22	BRH	BRH
P8	Third Floor Apartments removed Increase from 72 to 83 bedrooms	Mar '22	BRH	BRH
P7	Third Floor Apartments added Increase from 69 to 72 bedrooms	Feb '22	BRH	BRH
P6	Ex Pavement alterations added	Dec '21	BRH	BRH

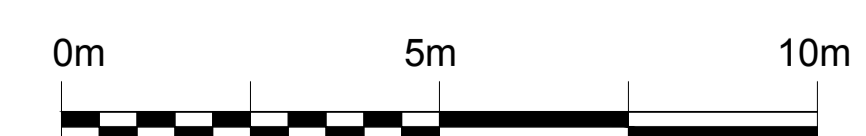
Rev	Description	Date	Dr by	App by
original by		date created		Approved by
BRH		Mar '21		BRH

AHR Architects Ltd
First Floor
Victoria House
Shrewsbury
SY1 1RH
United Kingdom

T: +44(0)174 5283000
F: +44(0)174 5283001
@ahr-global.com
www.ahr-global.com

client	Morris Property Ltd Welsh Bridge, Shrewsbury
project	Proposed Hotel Barker Street, Shrewsbury
drawing	Proposed Ground Floor Plan
project number	AR - 2021 - 00481.000
scale	1:100 @A1
drawing number	L - 003
rev	P10
issue status	Planning

Proposed Ground Floor Plan
Scale 1:100 @ A1



MONT HILL

Pay and Display Car Park
29 Spaces

Service Yard

Private Parking

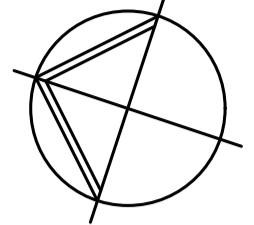
Claremont St
Baptist Church

BARKER STREET

FONT HILL

Notes

Ordnance Survey (C) Crown Copyright 2019
All rights reserved
Licence Number 100022432



Site Boundary

Rev	Description	Date	Dr by	App by
P10	Bin Store /ramps to Travelodge relocated. Main Stair enclosed at GF. Staff Room/Linen Store relocated.	May '22	BRH	BRH
P9	Boundary altered to include bin store to rear of Claremont Church Travelodge layout altered to suit comments issued 06/04/22	Apr '22	BRH	BRH
P8	Third Floor Apartments removed Increase from 72 to 83 bedrooms	Mar '22	BRH	BRH
P7	Third Floor Apartments added Increase from 69 to 72 bedrooms	Feb '22	BRH	BRH
P6	Ex Pavement alterations added	Dec '21	BRH	BRH

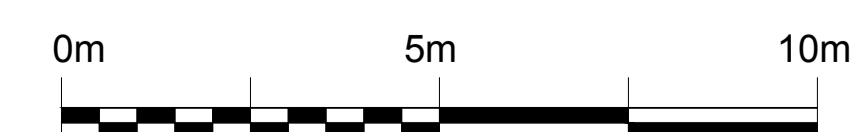
original by	Description	Date	Dr by	App by
BRH		Mar '21	BRH	BRH

AHR Architects Ltd
First Floor
Victoria House
Victoria Quay
Shrewsbury
SY1 1RH
United Kingdom

T: +44(0)174 2283000
F: +44(0)174 2283000
E: info@ahr-global.com
www.ahr-global.com

client	Morris Property Ltd Welsh Bridge, Shrewsbury
project	Proposed Hotel Barker Street, Shrewsbury
drawing	Proposed First Floor Plan
project number	AR-2021-00481.000
scale	1:100 @A1
drawing number	L-004
rev	P10
issue status	Planning

Proposed First Floor Plan
Scale 1:100 @ A1



Pay and Display Car Park
29 Spaces

Service Yard

Private Parking

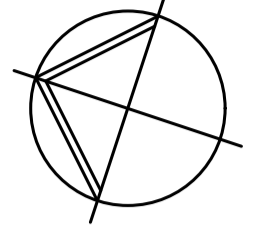
Claremont St
Baptist Church

BARKER STREET

MONT HILL

Notes

Ordnance Survey (C) Crown Copyright 2019
All rights reserved
Licence Number 100022432



Site Boundary

- P10 Bin Store /ramps to Travelodge relocated.
Main Stair enclosed at GF.
Staff Room/Linen Store relocated.
Staff Room replaced by Plant room May '22 BRH BRH
- P9 Boundary altered to include bin store to rear of Claremont Church
Travelodge layout altered to suit comments issued 06/04/22 Apr '22 BRH BRH
- P8 Third Floor Apartments removed
Increase from 72 to 83 bedrooms Mar '22 BRH BRH
- P7 Third Floor Apartments added
Increase from 69 to 72 bedrooms Feb '22 BRH BRH
- P6 Ex Pavement alterations added Dec '21 BRH BRH

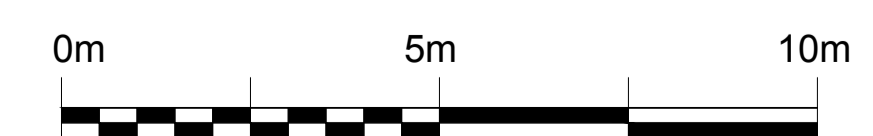
Rev	Description	Date	Dr by	App by
original by BRH		date created Mar '21		Approved by BRH

AHR Architects Ltd
First Floor
Victoria House
Victoria Quay
Shrewsbury
SY1 1RH
United Kingdom

T: +44(0)174 5283000
F: +44(0)174 5283000
E: info@ahr-global.com
www.ahr-global.com

client	Morris Property Ltd Welsh Bridge, Shrewsbury
project	Proposed Hotel Barker Street, Shrewsbury
drawing	Proposed Second Floor Plan
project number	AR - 2021 - 00481.000
scale	1:100 @A1
drawing number	L - 005
rev	P10
issue status	Planning

Proposed Second Floor Plan
Scale 1:100 @ A1



Pay and Display Car Park
29 Spaces

Service Yard

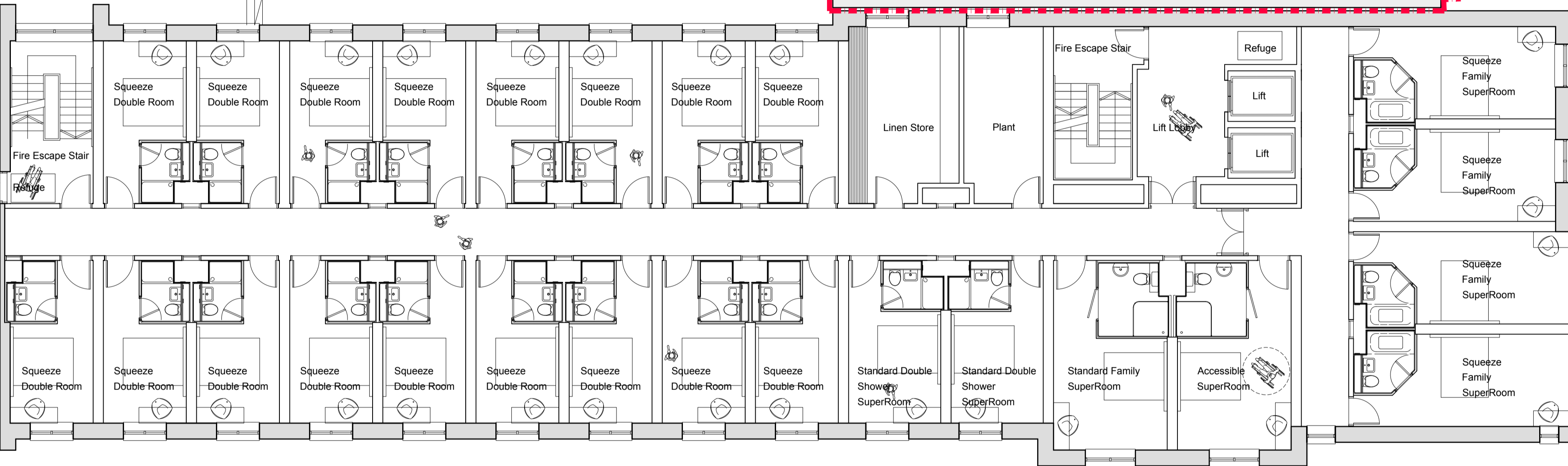
Private Parking

Claremont St
Baptist Church

Existing
Pavement
Cafe

Pavement Cafe

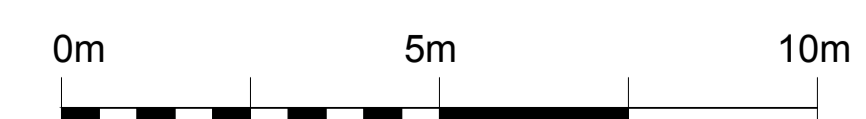
Location
of
Bedroom A/C condensers



BARKER STREET

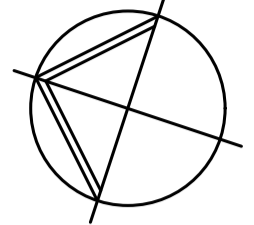
MONT HILL

Proposed Third Floor Plan
Scale 1:100 @ A1



Notes

Ordnance Survey (C) Crown Copyright 2019
All rights reserved
Licence Number 100022432



Rev	Description	Date	Dr by	App by
P10	Bin Store /ramps to Travelodge relocated. Main Stair enclosed at GF. Staff Room/Linen Store relocated. Staff Room replaced by Plant room	May '22	BRH	BRH
P9	Boundary altered to include bin store to rear of Claremont Church Travelodge layout altered to suit comments issued 06/04/22	Apr '22	BRH	BRH
P8	Third Floor Apartments removed Increase from 72 to 83 bedrooms	Mar '22	BRH	BRH
P7	Third Floor Apartments added Increase from 69 to 72 bedrooms	Feb '22	BRH	BRH
P6	Ex Pavement alterations added	Dec '21	BRH	BRH

original by	Description	Date	Dr by	App by
BRH		Mar '21	BRH	BRH

AHR Architects Ltd
First Floor
Victoria House
Victoria Quay
Shrewsbury
SY1 1RH
United Kingdom

T: +44(0)174 2283000
F: +44(0)174 2283001
E: info@ahr-global.com
www.ahr-global.com

client	Morris Property Ltd Welsh Bridge, Shrewsbury
project	Proposed Hotel Barker Street, Shrewsbury
drawing	Proposed Third Floor Plan
project number	AR - 2021 - 00481.000
scale	1:100 @A1
drawing number	L - 006
rev	P10
issue status	Planning

Pay and Display Car Park
29 Spaces

Service Yard

Private Parking

Claremont St
Baptist Church

Existing
Pavement
Cafe

Location
of
Bedroom A/C condensers

Location
of
Bedroom A/C condensers

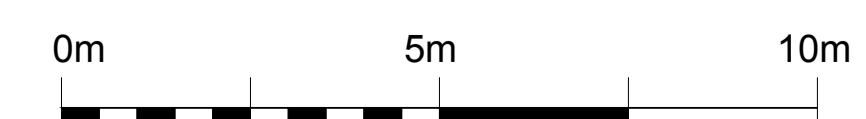
Location
of
Bedroom A/C condensers

Plant Room
Water tanks

BARKER STREET

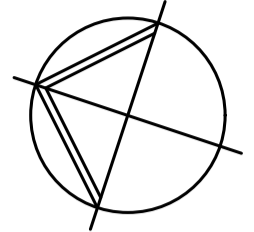
10 NT HILL

Proposed Plant Room Plan
Scale 1:100 @ A1



Notes

Ordnance Survey (C) Crown Copyright 2019
All rights reserved
Licence Number 100022432



Site Boundary

Rev	Description	Date	Dr by	App by
P9	Boundary altered to include bin store to rear of Claremont Church Travelodge layout altered to suit comments issued 06/04/22	Apr '22	BRH	BRH
P8	Third Floor Apartments removed Increase from 72 to 83 bedrooms	Mar '22	BRH	BRH
P7	Third Floor Apartments added Increase from 69 to 72 bedrooms	Feb '22	BRH	BRH
P6	Ex Pavement alterations added	Dec '21	BRH	BRH

original by	date created	Approved by
BRH	Mar '21	BRH

AHR Architects Ltd
First Floor
Victoria House
Shrewsbury
SY1 1RH
United Kingdom

T: +44(0)174 5283000
F: +44(0)174 5283001
E: info@ahr-global.com
www.ahr-global.com

client	Morris Property Ltd Welsh Bridge, Shrewsbury
project	Proposed Hotel Barker Street, Shrewsbury
drawing	Proposed Plant Room Plan
project number	AR - 2021 - 00481.000
scale	1:100 @A1
drawing number	L - 007
rev	P9
issue status	Planning

Pay and Display Car Park
29 Spaces

Service Yard

Private Parking

Claremont St
Baptist Church

Existing
Pavement
Cafe

Location
of
Bedroom A/C condensers

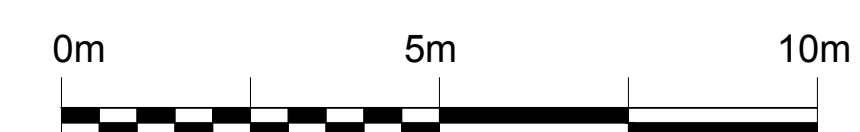
Location
of
Bedroom A/C condensers

Location
of
Bedroom A/C condensers

BARKER STREET

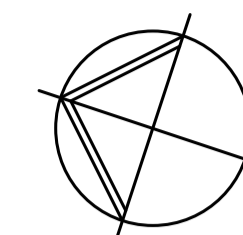
MONT HILL

Proposed Roof Plan
Scale 1:100 @ A1



Notes

Ordnance Survey (C) Crown Copyright 2019
All rights reserved
Licence Number 100022432



Site Boundary

Rev	Description	Date	Dr by	App by
P9	Boundary altered to include bin store to rear of Claremont Church Travelodge layout altered to suit comments issued 06/04/22	Apr '22	BRH	BRH
P8	Third Floor Apartments removed Increase from 72 to 83 bedrooms	Mar '22	BRH	BRH
P7	Third Floor Apartments added Increase from 69 to 72 bedrooms	Feb '22	BRH	BRH
P6	Ex Pavement alterations added	Dec '21	BRH	BRH

original by	date created	Approved by
BRH	Mar '21	BRH

AHR Architects Ltd
First Floor
Victoria House
Victoria Quay
Shrewsbury
SY1 1RH
United Kingdom
T: +44(0)174 5283000
F: +44(0)174 5283001
@ahr-global.com
www.ahr-global.com

client	Morris Property Ltd Welsh Bridge, Shrewsbury		
project	Proposed Hotel Barker Street, Shrewsbury		
drawing	Proposed Roof Plan		
project number	AR - 2021 - 00481.000	scale	1:100 @A1
drawing number	L - 008	rev	P9
		issue status	Planning

Notes

THIS DRAWING READ IN CONJUNCTION WITH :

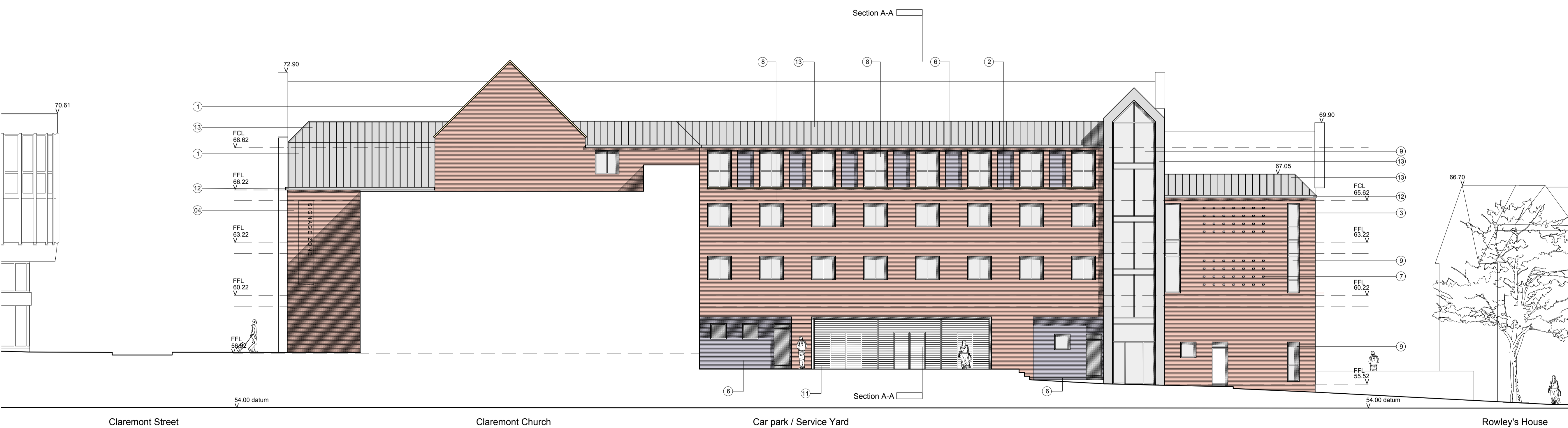
Key

- 1 - Precast Sandstone capping
- 2 - Precast Sandstone cill
- 3 - Red facing brick - flemish bond
- 4 - Red facing brick - soldier course
- 5 - Red facing brick - recessed panel / flemish bond
- 6 - Blue facing brick - flemish bond
- 7 - Blue facing brick - projecting headers
- 8 - Low profile PPC aluminium window frames
- 9 - Low profile PPC aluminium curtain wall
- 10 - Projecting PPC aluminium trim to reveal.
- 11 - PPC aluminium louvres
- 12 - PPC aluminium guttering
- 13 - Zinc cladding with 25mm standing seam
- 14 - PPC aluminium frame shop fronts



Proposed West Elevation

Scale 1:125 @ A1



Proposed East Elevation

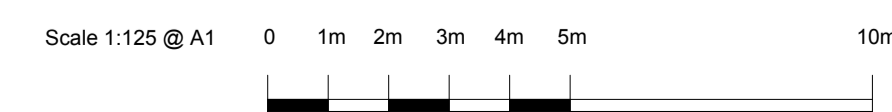
Scale 1:125 @ A1

Rev	Description	Date	Dr by	App by
P8	Third Floor Apartments removed Increase from 72 to 83 bedrooms	Mar '22	BRH	BRH
P7	Third Floor Apartments added Increase from 69 to 72 bedrooms	Feb '22	BRH	BRH
P6	Ex Pavement alterations added	Dec '21	BRH	BRH

AHR Architects Ltd
 First Floor
 Victoria House
 Shrewsbury
 SY1 1RH
 United Kingdom

T: +44(0)174 3283000
 F: +44(0)174 3283001
 E: ahr@ahr-global.com
 www.ahr-global.com

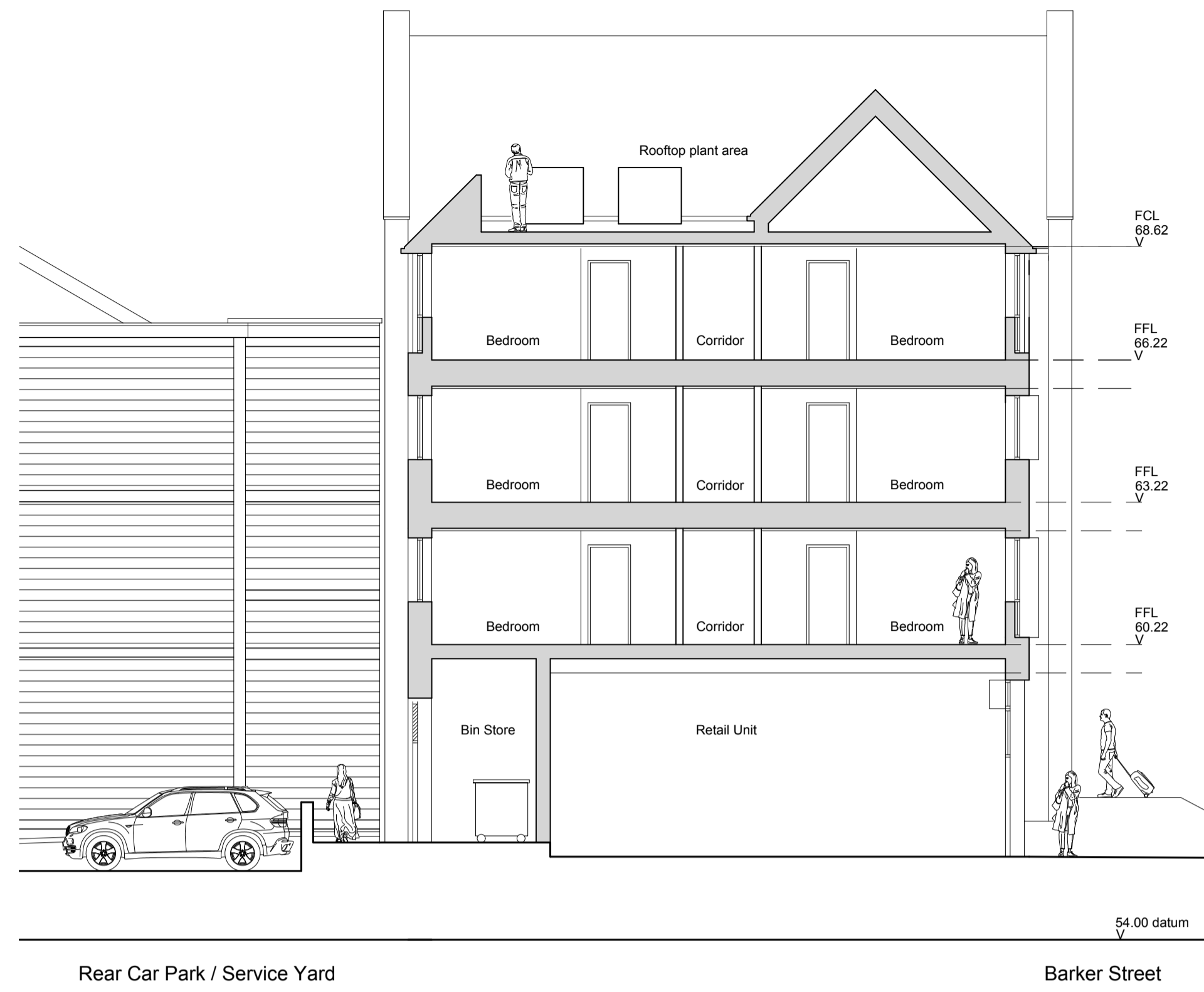
client	Morris Property Ltd Welsh Bridge, Shrewsbury
project	Proposed Hotel Barker Street, Shrewsbury
drawing	Proposed West Elevation Proposed East Elevation
project number	AR - 2021- 00481.000
scale	1:125 @A1
drawing number	L - 010
rev	P8
issue status	Planning





Proposed North Elevation

Scale 1:100 @ A1



Proposed Section A-A

Scale 1:100 @ A1



Proposed South Elevation

Scale 1:100 @ A1

Notes

THIS DRAWING READ IN CONJUNCTION WITH :

Key

- 1 - Precast Sandstone capping
- 2 - Precast Sandstone cill
- 3 - Red facing brick - flemish bond
- 4 - Red facing brick - soldier course
- 5 - Red facing brick - recessed panel / flemish bond
- 6 - Blue facing brick - flemish bond
- 7 - Blue facing brick - projecting headers
- 8 - Low profile PPC aluminium window frames
- 9 - Low profile PPC aluminium curtain wall
- 10 - Projecting PPC aluminium trim to reveal.
- 11 - PPC aluminium louvres
- 12 - PPC aluminium guttering
- 13 - Zinc cladding with 25mm standing seam
- 14 - PPC aluminium frame shop fronts

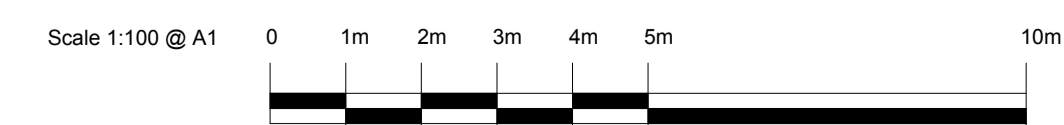
P9	Window bays adjacent to Church altered	May '22	BRH	BRH
P8	Third Floor Apartments removed Increase from 72 to 83 bedrooms	Mar '22	BRH	BRH
P7	Third Floor Apartments added Increase from 69 to 72 bedrooms	Feb '22	BRH	BRH
P6	Ex Pavement alterations added	Dec '21	BRH	BRH

Rev	Description	Date	Dr by	App by
original by		date created		Approved by
BRH		Mar '21		BRH

AHR Architects Ltd
 First Floor
 Victoria House
 Victoria Quay
 Shrewsbury
 SY1 1RH
 United Kingdom

T: +44(0)174 3283000
 F: +44(0)174 3283019
 E: ahr@ahr-global.com
 www.ahr-global.com

client	Morris Property Ltd Welsh Bridge, Shrewsbury
project	Proposed Hotel Barker Street, Shrewsbury
drawing	Proposed North Elevation Proposed South Elevation Proposed Section A-A
project number	AR - 2021- 00481.000
scale	1:100 @A1
drawing number	L - 011
rev	P9
issue status	Planning















CLAREMONT BAPTIST CHURCH

1878

Travelodge



HR