

Agenda 4 – Matters Arising

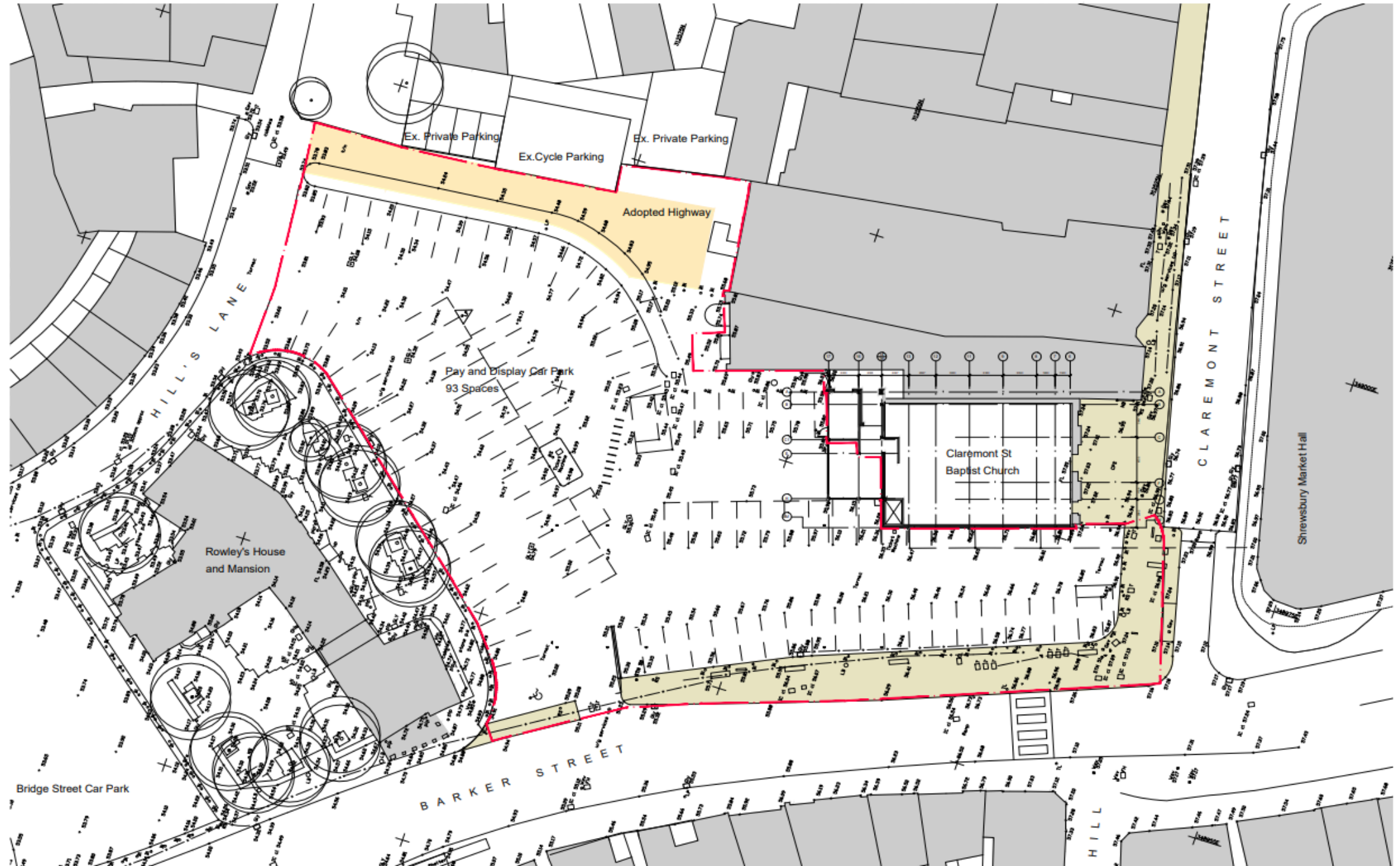
4.1 – Re-consultation

23/01422/FUL - Car Park, Barker Street, Shrewsbury.

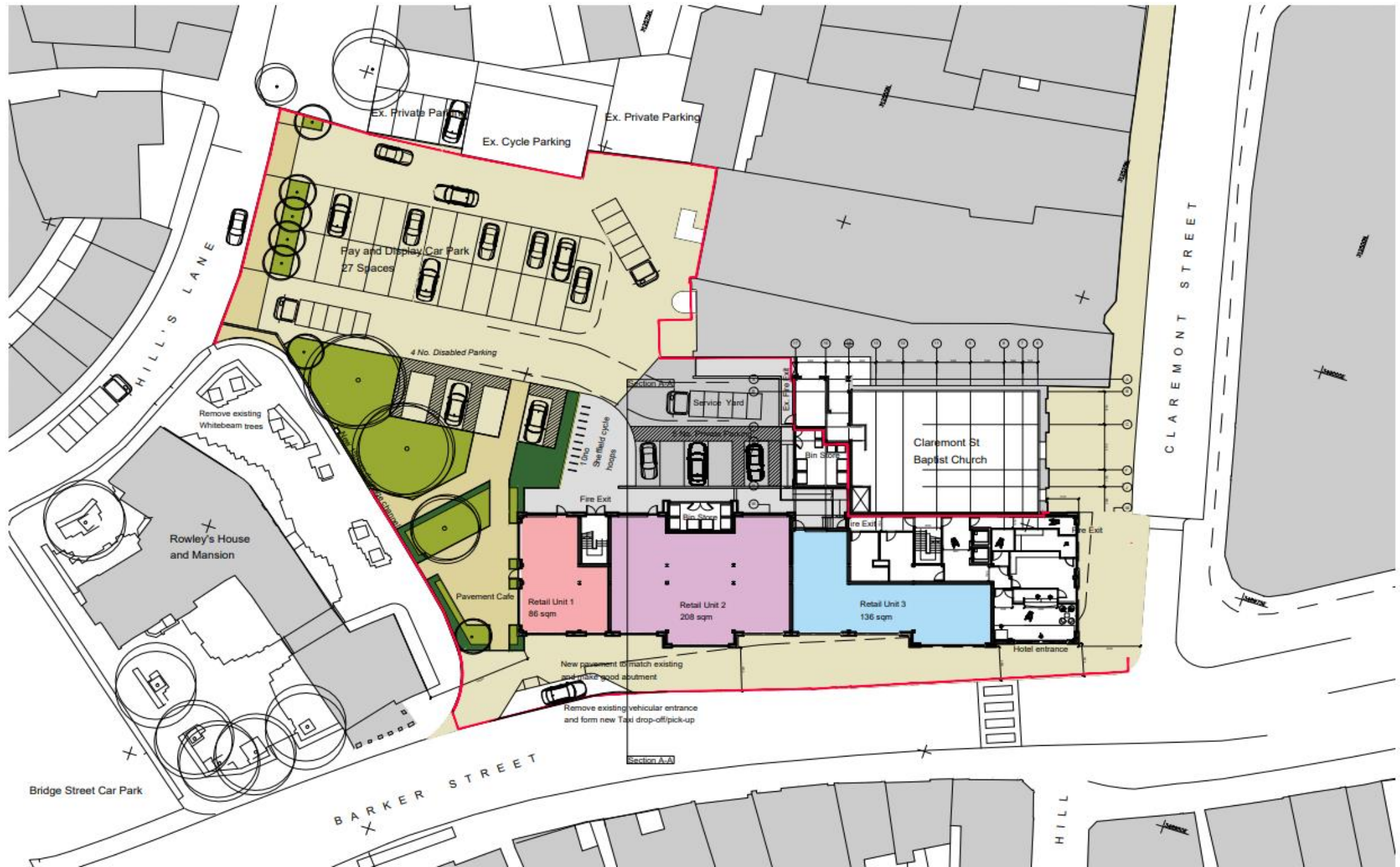
Proposed mixed use development to include 83 Bed Hotel and 3 No. Retail Units with associated Car Parking and Landscaping

Proposed plans & elevations on next 13 slides

Existing site plan



Proposed site plan





Proposed West Elevation

Scale 1:100 @ A1



East Elevation

Proposed
elevations



Proposed
elevations



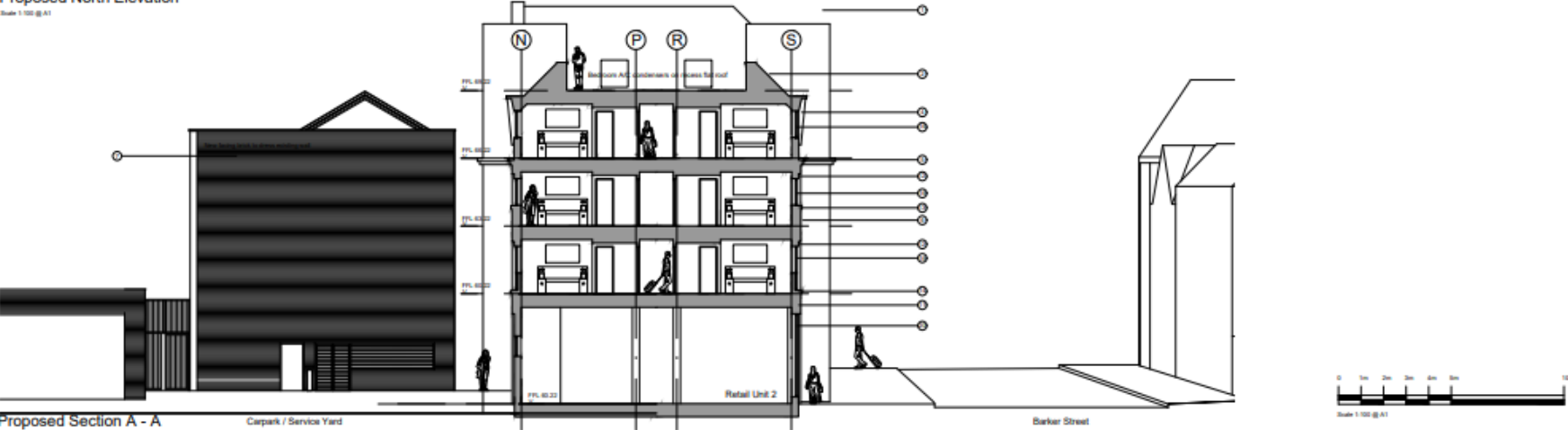
Proposed South Elevation

Scale 1/100 @ A1



Proposed North Elevation

Scale 1/100 @ A1



Proposed Section A - A

Carpark / Service Yard

Barker Street





Existing street view



Proposed street view

View from Barker Street looking South - elevation presents to acknowledge the historic buildings adjacent, the rhythm and grain of the street, turning the corner to face Rowley's house with enhanced public realm



Existing street view



Proposed street view

View from Bellstone looking North preserving a clear view through to Rowley's house while providing a strong corner between Barker Street and Claremont Street. The cornice line reflects that of the historic townscape and materials respond positively to the character and appearance of historic buildings.

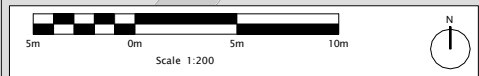


Street scene



View from Hills Lane through new footpath link through to Barker Street with the opportunity to reinforce connectivity and significantly enhance the public realm. The East face of the proposed building is designed to have the same quality as the west (Barker Street) elevation, in this regard the building has aspects to all four sides.







INTERIM PARKING
ARRANGEMENT
TO MAINTAIN
COLEHALL
ACCESS VEHICLE
TRACKING