

# Agenda 4 – Matters Arising

## 4.1 – Re-consultation

21/05565/TPO - 1 Dogpole Court, Shrewsbury, SY1 1ES.

**Crown raise branches overhanging 19 Wyle Cop by up to 4m of 1no Scots Pine protected by the Shrewsbury & Atcham Borough Council (1 & 2 Dogpole Court) Tree Preservation Order 1975**

**STC Decision – Objection – Meeting Date 14/12/2021 – Members respectfully request that Shropshire Council's Tree Officer visits the site and provides expert assessment and recommendations on the proposed works for this tree. Members fully support the concerns that have been raised by the landowner.**

Comments/photos on next 2 slides

## Response from Shropshire Council

Thank you for the comments you made with regards to the proposed tree works at 1 Dogpole Court to a protected Scots Pine. The tree officer, Andrea King, has been corresponding with the applicant and has asked for amendments to the original proposal. The work being requested (with the tree officer's input) is now:

‘To prune back the long branches on the mature pine tree in neighbour's garden to suitable growth points by approx. 3-4m, to bring the coverage of the crown in line with the yew tree below and to balance the crown to be in line with pruning previously done on the other side of 1no Scots Pine protected by the Shrewsbury & Atcham Borough Council (1 & 2 Dogpole Court) Tree Preservation Order 1975 (Ref: SA/74) and to also trim branches by approx. 30 cm to give a bit of clearance around the wall and bring them in line with the rest of the crown of 1no Yew’

Plan showing  
Ariel View of Large Pine Tree and branches overhanging  
the Property of 19 Wyle Cop, Stradbury  
outlined in green.  
- 10 m -

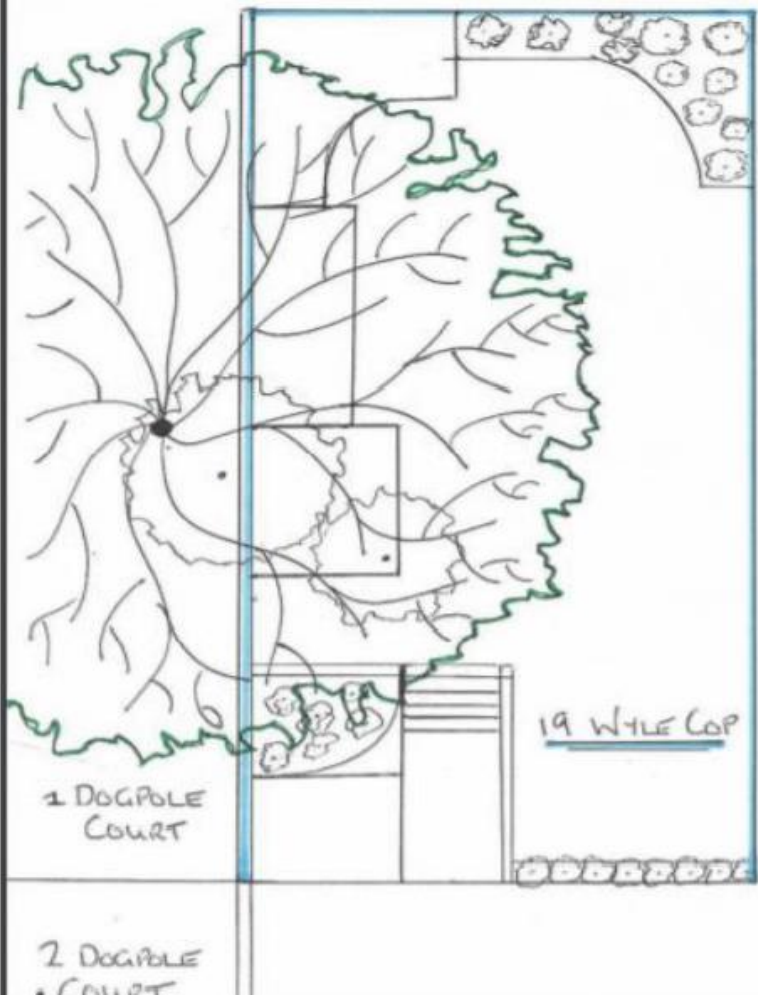


Photo of Pine Tree elevation and spread



Photo showing extent of overhanging branches from the Pine Tree



Photo showing height and spread of Pine Tree



At - 10 m -